



BlackBerry AtHoc

User Sync Client

1.2

Contents

What is the BlackBerry AtHoc User Sync Client?.....	5
Supported upgrade paths from LDAP and CSV Importer Tool.....	5
User synchronization process overview.....	6
Data adapter.....	6
Data processor.....	6
Data synchronizer.....	6
Authentication.....	7
Supported data sources.....	8
System requirements.....	8
Install and set up the BlackBerry AtHoc User Sync Client.....	9
Provision the BlackBerry AtHoc API client.....	9
Set up an organization code in the BlackBerry AtHoc system.....	9
Configure the BlackBerry AtHoc system.....	10
Install the BlackBerry AtHoc User Sync Client.....	10
Execute the BlackBerry AtHoc User Sync Client.....	11
Configure BlackBerry AtHoc User Sync Client components.....	11
(Optional) Configure SSL settings.....	11
Test the output of each component.....	12
Get status by email.....	12
Logging.....	12
Configure the data integration file.....	14
Configuration overview.....	14
Configuration node descriptions.....	15
Data adapter configuration.....	16
LDAP data adapter configuration.....	16
LDAP data adapter output XML.....	16
LDAP data adapter node descriptions.....	17
LDAP connection parameters	17
LDAP connection parameter node descriptions.....	18
LDAP class-based configuration—<classConfig>.....	19
LDAP Hierarchy-based configuration—<hierarchyConfig>.....	20
CSV data adapter configuration.....	26
Data processor configuration.....	28
LDAP data processor.....	28
CSV data processor.....	29
Data synchronizer configuration.....	31
sdkParameters section.....	31
Sync operation configuration.....	32

Synchronize LDAP groups.....	33
How to synchronize users for enterprise user moves.....	35
How to bulk update users' physical location.....	36
How to configure organization subscription with the User Sync Client and API.....	38
Troubleshoot the User Sync Client.....	39
Appendix A: Adtools.exe.....	42
Set LDAP Info.....	42
Display LDAP Entry Details.....	42
Display Class Type and Count.....	42
Test Regular Expression.....	42
Appendix B: Migrate from LDAP Sync Client version 1.2.7 to BlackBerry AtHoc User Sync Client.....	43
Prerequisites.....	43
Set authentication parameters.....	43
Remove deprecated configuration.....	43
Migrate from mid to login_id.....	44
How to migrate.....	45
Change the AtHocDataConfiguration.config file.....	45
Change the XSL template file.....	46
Distribution list mapping in LDAP Sync v 1.2.7.....	46
Distribution list mapping after User Sync Client.....	47
Considerations for using User Sync Client to perform LDAP synchronization for existing customers.....	47
Appendix C: Differences between the CSV Importer Tool and the BlackBerry AtHoc User Sync Client.....	48
BlackBerry AtHoc Customer Support Portal.....	49
Documentation feedback.....	50
Legal notice.....	51

What is the BlackBerry AtHoc User Sync Client?

The BlackBerry® AtHoc® User Sync Client is a command line tool that enables you to synchronize user information from an LDAP data source or .csv file to the BlackBerry AtHoc system. Synchronization of user contact information with an external source ensures that user information in the BlackBerry AtHoc system is up to date with external sources and critical alerts are delivered to intended users.

The BlackBerry AtHoc User Sync Client replaces the LDAP Data Integration Module and CSV Importer Tool. Instead of providing two separate tools, the functionality of these tools is merged into a single tool.

Supported upgrade paths from LDAP and CSV Importer Tool

LDAP 1.2.7: If you are moving from LDAP 1.2.7, which uses the SDK, you need to migrate to the User Sync Client version 1.0.0. For instructions, see [Appendix B: Migrate from LDAP Sync Client version 1.2.7 to BlackBerry AtHoc User Sync Client](#).

LDAP 2.0: If you are moving from LDAP 2.0, the configuration is fully compatible.

CSV Importer Tool: If you are moving from the CSV Importer Tool, you need to follow the configuration steps detailed in this document. See [Appendix C: Differences between the CSV Importer Tool and the BlackBerry AtHoc User Sync Client](#).

User synchronization process overview

The BlackBerry AtHoc User Sync Client is a Windows console application which can be executed by a Windows domain user or a Windows task scheduler. Using sets of configuration files, the User Sync Client tool can obtain data from a .csv file or an LDAP server, perform necessary transformation using XSL files, and synchronize data with the BlackBerry AtHoc system. It can also send email using SMTP configuration to specified recipients.

The BlackBerry AtHoc User Sync Client can be scheduled by the Windows task scheduler to execute at a specified time interval or manually executed by a user.

The tool processes data using three components: data adapter, data processor, and data synchronizer.

Data adapter

The data adapter is a component of the User Sync Client that can access .csv files kept in a local folder or remote LDAP server accessible from where the tool is run. The data adapter takes configuration inputs and outputs an XML file which is then used by the [Data processor](#).

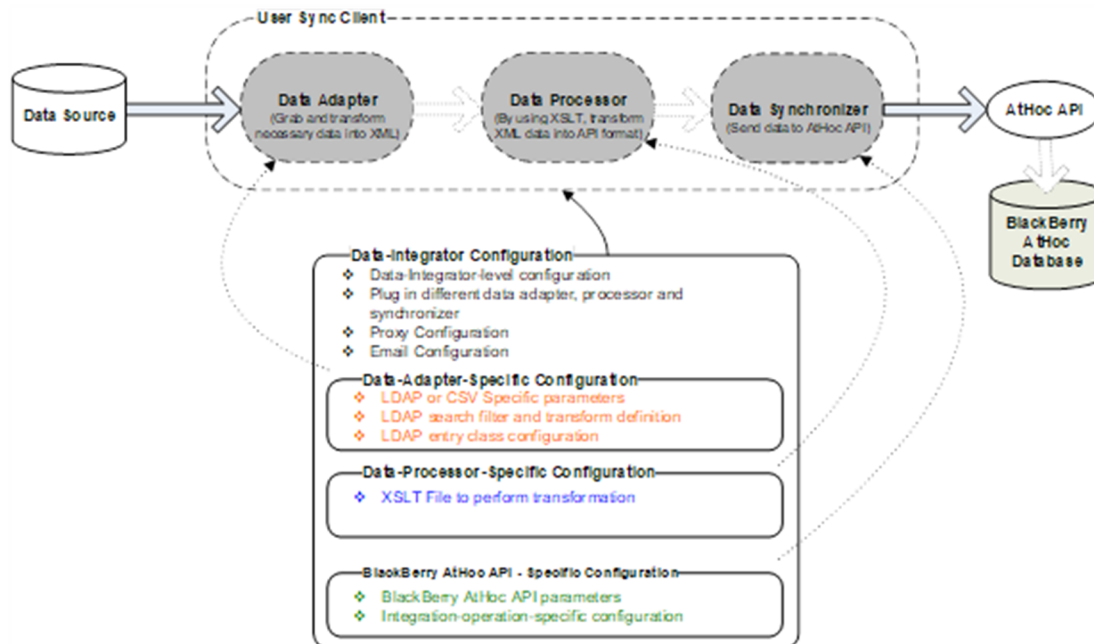
Data processor

The data processor is a component of the User Sync Client that consumes the intermediate XML file generated by the data adapter and XSL file that you provide to map necessary fields from the data source to BlackBerry AtHoc user fields. You can write different transformation logic in an external XSL file to meet your requirements. The data processor generates an XML file suitable for use by the [data synchronizer](#).

Data synchronizer

The data synchronizer is a component of the User Sync Client that consumes the intermediate XML file generated by the data processor and prepares it to be sent to the BlackBerry AtHoc web API interface.

The following diagram shows an overview of the synchronization process with configuration interaction:



Authentication

When the User Sync Client is authenticated against the authentication server using the password grant type, the User Sync Client receives a refresh token and an access token. The refresh token is stored in the User Sync Client configuration with the `<RefreshToken>` parameter in the SDK settings.

Access tokens contain the information that is needed to access a resource directly. When a client passes an access token to a server that manages a resource, that server uses the information in the access token to determine if the client is authorized.

Refresh tokens contain the information to obtain a new access token. When an access token is needed to access a specific resource, a client can use a refresh token to obtain a new access token issued by the authentication server. Refresh tokens are used when a client attempts to gain access to a resource for the first time and when access tokens have expired.

Refresh tokens expire after 30 days. Refresh tokens have a sliding window lifetime of 15 days. After 30 days, the client must reauthenticate, regardless of the validity period of the most recent refresh token acquired by the application.

After a first run, the User Sync Client removes the username and password rows from the configuration and replaces them with a refresh token. During each subsequent run of the User Sync Client, the refresh token is used to obtain a new access token from the authentication server and to submit the User Sync Client payloads to the resource server.

If the refresh token expires, the User Sync Client uses the username and password to reestablish the refresh token and access token automatically. The User Sync Client will not be able to reestablish the refresh token and access token automatically if any of the following items are modified in the BlackBerry AtHoc management system: client ID, client secret, username, password, and organization code.

Supported data sources

The BlackBerry AtHoc User Sync Client supports LDAP servers and CSV files as data sources. When you use an LDAP server as a data source, you can synchronize users, hierarchies, and distribution lists from LDAP to BlackBerry AtHoc. A CSV data source supports synchronizing only user data. The following table lists the capabilities for LDAP and CSV data sources.

Capability	LDAP data source	CSV data source
User data	Yes	Yes
Organization hierarchy structure	Yes	No
Distribution lists	Yes	No
Distribution list user membership	Yes	Yes (as part of user data)
Nested distribution lists	Yes	No
Proxy configuration	Yes	Yes
Send status email	Yes	Yes
Multiple rounds of integration	Yes	Yes
Support for super enterprise and enterprise user management	Yes	Yes

System requirements

Operating system

- Windows Vista and higher client operating system, or Windows Server 2008 SP2 or higher server operating system
- Microsoft Framework .NET 4.7.2 and 6.0.x installed

BlackBerry AtHoc system

7.9 or later release

LDAP directory

- For full search capability, the LDAP directory must support the Paged Results Control of LDAP v3 (OID: 1.2.840.113556.1.4.319.)
- An LDAP directory that does not support Paged Results Control depends on the search result size limit setting of the directory server. For example, if the number of users in a single OU exceeds the size limit, the LDAP sync module does not obtain all users in the OU.
- To synchronize LDAP groups, the LDAP server must support the Attribute Scoped Query Control of LDAP v3 (OID: 1.2.840.113556.1.4.1504.)

Install and set up the BlackBerry AtHoc User Sync Client

To install and set up the BlackBerry AtHoc User Sync Client, complete the tasks in the following sections.


Provision the BlackBerry AtHoc API client

The BlackBerry AtHoc User Sync Client uses the BlackBerry AtHoc API to synchronize users. The client is authenticated using the industry standard OAuth 2.0 protocol before allowing access to call APIs. You must have a client ID and client secret provisioned for your instance of the BlackBerry AtHoc User Sync Client.

Before you begin:

You must be an Organization Administrator, Enterprise Administrator, or System Administrator to provision the BlackBerry AtHoc API client. You must be a System Administrator to enable a provisioned application.


This task is not required if you already have a client ID and client secret.

1. Log in to the BlackBerry AtHoc management system as an Organization Administrator, Enterprise Administrator, or System Administrator.
2. In the navigation bar, click .
3. In the **System Setup** section, click **API Applications**.
4. On the **API Applications** screen, click **New**.
5. On the **New API Application** screen, enter a name for the API integration.
6. (System administrators only) Next to **Status**, select **Enabled**.
7. In the **Authentication** section, select **Password** for **Grant Type**.
8. Click **Save**. A Success message appears that includes the client ID and client secret.
9. Take note of the displayed client ID and client secret. It is displayed only once and will need to be regenerated if lost.

Set up an organization code in the BlackBerry AtHoc system

The BlackBerry AtHoc User Sync Client needs the organization code to synchronize users to a specific organization in the BlackBerry AtHoc system. Complete the following task to set up an organization code for your organization in the BlackBerry AtHoc management system. This organization code is not propagated to PSS. If you already have an organization code in PSS, use it to complete this task.

Note: This task is not required if an organization code for your organization has already been provided to you.

1. Log in to the BlackBerry AtHoc management system as a System Administrator.
2. Switch to the specific organization.
3. In the navigation bar, click .
4. In the **Basic** section, click **General Settings**.
5. On the **General Settings** page, in the **Organization Details** section, enter the organization code. Do not use spaces.
6. Click **Save**.

Configure the BlackBerry AtHoc system

To configure the BlackBerry AtHoc system, complete the following tasks:

1. Create all custom fields to be synchronized and assign unique common names to them.
2. Create a user with operator permissions.
3. Give the new user the End Users Manager and any other required roles. For more information, see [BlackBerry AtHoc Roles and Permissions Matrix](#).
4. Select the **Service Account** option in the new user profile. Selecting this option prevents the account from being automatically disabled or deleted, or having the required operator permissions revoked.

Install the BlackBerry AtHoc User Sync Client

1. Obtain the latest User Sync Client MSI from BlackBerry AtHoc customer support.
2. Run the MSI as an administrator.
3. Follow the prompts to install the BlackBerry AtHoc User Sync Client in the directory of your choice.

Once installed, the BlackBerry AtHoc User Sync Client has the following structure in the installed directory:

- **bin folder:** This folder has the libraries (DLLs) needed to execute the BlackBerry AtHoc User Sync Client.
- **sample folder:** This folder has two sub folders: **CSV** and **LDAP**. Each sub folder has a configuration file and several sample files for your reference. You can use these sample files to configure the BlackBerry AtHoc User Sync Client for either the .csv or LDAP data sources.
- **tools folder:** This folder contains other useful tools.
- **AtHocDataIntegration.config file:** This is the main configuration file for the BlackBerry AtHoc User Sync Client where you can specify the data adapter, data processor, and data synchronizer configurations.
- **AtHocDataIntegrator.exe.config file:** This is the configuration file used for the executable. Do not modify this file.
- **AtHocDataIntegrator.exe executable:** This is the main executable file. You can run this file manually or through Windows Task Scheduler. Before running this file, ensure that your configurations and XSLT files are in place.
- **Sample.xslt XSL file:** This is a file that is used to transform the XML generated by the data adapter to XML suitable for the data processor. This sample file is for the LDAP data adapter. A sample file for .csv is present in sample/csv folder. You must replace this file with the proper XSL file that matches your transformation requirements.

Execute the BlackBerry AtHoc User Sync Client

This section explains how to configure the data integration configuration file before executing the BlackBerry AtHoc User Sync Client. This section describes the purpose and results of using the three major components of the BlackBerry AtHoc User Sync Client and provides sample XML code.

Configure BlackBerry AtHoc User Sync Client components

The BlackBerry AtHoc User Sync Client consists of the following components:

1. **Data adapter:** Accesses the data source, either .csv or LDAP, to obtain information that is specified by the configuration.
 2. **Data processor:** Uses the XSLT to transform XML data into a BlackBerry AtHoc-friendly format and prepares data for the web API data synchronizer.
 3. **Web API data synchronizer:** Sends data to the BlackBerry AtHoc web API. User data is split into several web API packages to adapt the capability of the web API interface.
1. If required, configure system wide settings for SMTP email and Proxy settings in the configuration file.
 2. Set the log file folder path. Decide if you want to save the interim XML files. You should use the "false" value for the <deleteInterimFiles> node for first time integration.
 3. Disable all sections by setting the "enabled" attribute to "false". This configuration enables you to test each component separately by enabling them as required.
 4. Configure the data adapter section of the integration file under the <dataAdapter> node. Set the "enable" attribute on the <dataAdapter> node to "true". Configure any other nodes under this node according to the requirements.
 5. Run the `AtHocDataIntegrator.exe` file.
 6. Check the XML output file produced by the data integrator.
 7. If everything looks good in the XML output, create a new XSLT file to write the transformation logic for the file generated by the data integrator.
 8. Specify the file path to the XSLT file.
 9. Run the `AtHocDataIntegrator.exe` file again.
 10. Check the XML output file produced by data processor.
 11. Configure <dataSynchronizer> node according to requirements.
 12. Set the "enable" attribute to "true."
 13. Run the `AtHocDataIntegrator.exe` file again.
 14. If everything is correct, the users, hierarchies, and distribution lists should be synchronized correctly.

After you finish:

For more information about configuring the BlackBerry AtHoc User Sync Client for a .csv or LDAP data source, see [Configure the data integration file](#).

(Optional) Configure SSL settings

By default, the BlackBerry AtHoc User Sync Client uses the default SSL protocols of the operating system starting with the latest version to communicate with the server. For example TLS 1.2, TLS 1.1, TLS 1.0. You can configure the User Sync Client to include or exclude specific SSL protocols if needed by updating the <appSettings> node in the `AtHocDataIntegrator.exe.config` file.

To specify a custom order for security protocols, add the following parameters to the AtHocDataIntegrator.exe.config file:

```
<appSettings>
<add key="SecurityProtocols.exclude" value="ssl3,tls,tls11" />
<add key="SecurityProtocols.include" value="Tls12" />
```

To use the default operating system protocols for client server communication without configuring specific protocols, add the following parameters to the AtHocDataIntegrator.exe.config file:

```
<appSettings>
<add key="SecurityProtocols.exclude" value=" " />
<add key="SecurityProtocols.include" value=" " />
```

You must specify both the include and exclude statements to configure specific protocols. For example, the following configurations are not allowed:

```
<appSettings>
<add key="SecurityProtocols.exclude" value=" " />
<add key="SecurityProtocols.include" value=" Tls12" />
```

```
<appSettings>
<add key="SecurityProtocols.exclude" value="ssl3,tls,tls11" />
<add key="SecurityProtocols.include" value=" " />
```

Test the output of each component

You can test the output of each component by setting the <deleteInterimFiles> node to "false" and incrementally enabling each section by setting enable=true. This outputs the interim XML files in the folder you specified for <tempFolderPath> under the <systemSettings> node.

Get status by email

The User Sync Client can send email after each execution using the SMTP server details you provide. You need following information to send an email:

- SMTP server address
- Username and password for the SMTP server
- Recipients email addresses
- The email address you want to send an email from
- The name of the sender

You can configure these options under the <userMailService> node under <systemSettings> in the configuration file.

Logging

Each execution of the BlackBerry AtHoc User Sync Client generates a log file which is named using the timestamp and the .log extension. The log file is placed in the temporary folder that is specified by the configuration. This log

file contains detailed processing information. In addition, the LDAP module generates a system event log entry to report process summary and error information. The source of the event log entry is AtHoc::DataIntegration.

Configure the data integration file

The BlackBerry AtHoc User Sync Client uses an XML-based configuration file, `AtHocDataIntegration.config`, to configure different components of the client. This file is usually kept in the same folder as the `AtHocDataIntegrator.exe` file. You can change the location of this file. If you want to load the file from a different location, provide the full path of the file as an argument when you run the `AtHocDataIntegrator.exe` file.

Configuration overview

The following code outlines the structure of the configuration file. Each node in this XML file is described in detail below.

```
<AtHocDataIntegration>

  <systemSettings>
    <tempDataPath>tempdata/</tempDataPath>
    <deleteInterimFiles>true|false</deleteInterimFiles>
    <!--Other system settings goes here -->
  </systemSettings>

  <integrations>

    <!-- One round integration -->
    <integration>

      <dataAdapter assembly="AtHoc.DataIntegration.dll"
class="AtHoc.DataIntegration.Adapter.ActiveDirectory.AdDataAdapter"
        outputFile="adapter.xml">

        <!-- Data-Adapter-Specific configuration -->

      </dataAdapter>

      <dataProcessor assembly="AtHoc.DataIntegration.dll"
class="AtHoc.DataIntegration.Processor.XsltDataProcessor"
        inputFile="adapter.xml"
        outputFile="processor.xml">

        <!-- Data-Processor-Specific configuration -->

      </dataProcessor>

      <dataSynchronizer assembly="AtHoc.DataIntegration.dll"
class="AtHoc.DataIntegration.Synchronizer.Sdk.SdkDataSynchronizer"
        inputFile="processor.xml">

        <!-- Data-Synchronizer-Specific configuration -->

      </dataSynchronizer>

    </integration>

    <!-- Another round integration -->
```

```

    <integration>
      <!-- ... -->
    </integration>

  </integrations>

</AtHocDataIntegration>

```

Configuration node descriptions

<AtHocDataIntegration>: This is the root node of the configuration file. All other nodes must be kept inside this node.

<systemSettings>: This is the node where you can specify general settings that are used by the User Sync Client. The <systemSettings> node has following sub nodes:

- **<tempDataPath>**: Specifies the temporary path to store logs and interim files.
- **<deleteInterimFiles>**: Indicates whether to delete interim files after integration.
- **<proxy>**: Used to configure proxy settings. The User Sync Client needs to access Web API URLs hosted on the cloud (for cloud deployments) to successfully run the synchronization. If the organization policy requires the use of a proxy server for outbound connections, you can configure those settings here. The <proxy> node has following sub nodes:
 - **<url>**: The URL of the proxy server provided to you by your organization administrator.
 - **<port>**: The port number used for the proxy server provided to you by your organization administrator.
 - **<username>**: The username for the proxy server user account. This username is provided to you by your organization administrator.
 - **<password isEncrypted="false">**: The password for the proxy server user account, provided to you by your organization administrator.
- **<useMailService>**: This node is used to configure an SMTP mail server for sending status emails. The <useMailService> node has following sub nodes:
 - **<smtpServer>**: Mail server address, provided to you by your organization administrator.
 - **<username>**: Username for the mail server used to send an email.
 - **<password>**: Password for the mail server used to send an email.
 - **<recipient>**: Semicolon-separated list of intended email recipients.
 - **<fromAddress>**: Email address used to send email.
 - **<fromName>**: Name that appears as the sender of an email.

<integrations>: The <integrations> node contains integration sections that consist of configurations for the data adapter, processor, and synchronizer.

<integration>: The <integration> node has following sub nodes:

- **<dataAdapter>**: The <dataAdapter> node contains data adapter-specific configuration.
 - The "assembly" attribute specifies the .NET assembly where the data adapter is located.
 - The "class" attribute specifies the full class name of the data adapter.
 - The optional "outputFile" attribute specifies the name of the XML file that the data adapter exports data to.
- **<dataProcessor>**: The <dataProcessor> node contains data processor-specific configuration.
 - The "assembly" attribute specifies the .NET assembly where the data processor is located.
 - The "class" attribute specifies the full class name of the data processor.
 - The optional "inputFile" attribute specifies the file the data processor reads data from.
 - The optional "outputFile" attribute specifies the file the data processor exports data to.
- **<dataSynchronizer>**: The <dataSynchronizer> node contains data synchronizer-specific configuration.

- The “assembly” attribute specifies the .NET assembly where the data synchronizer is located.
- The “class” attribute specifies the full class name of the data synchronizer.
- The optional “inputFile” attribute specifies the file the data synchronizer reads data from.

Note: The “inputFile” and “outputFile” attributes are useful for testing a configuration but are not recommended for production. These attributes can specify a relative or absolute path. If the attributes are not specified, the User Sync Client generates file names based on the timestamp and places the files in the temporary data folder or it uses the filename from the previous step.

Tip: Configure multiple integration sections to synchronize data from multiple sources.

Data adapter configuration

The User Sync Client supports .csv and LDAP data sources for user synchronization. Data adapter configurations are different for the CSV data adapter and the LDAP data adapter. The following sections describe configurations for each data adapter.

LDAP data adapter configuration

Tip: Some parameter values can contain characters that are illegal in XML. This results in errors that may not indicate the illegal character but will indicate the line number. In this case, surround the parameter value on that line with a CDATA section: `<parameter_name><![CDATA[value]]></parameter_name>`.

The LDAP data adapter takes configurations specified in the configuration file as input and produces an XML output with a predefined structure. In the configuration file, the LDAP data adapter configuration has three major configuration nodes: `<adParameters>`, `<hierarchyConfig>` and `<classConfig>`. Each configuration node can have one or many sub nodes which are described below.

LDAP data adapter output XML

The LDAP data adapter produces an XML output similar to the one below.

Note: Output XML is highly dependent on configuration, but produces an output with the following general structure.

```
<IntegrationData from="AdDataAdapter">
  <hynode type="TREE" name="ABC Inc.">
    <attributes>
      <lineage />
    </attributes>
    <hynode type="TREE" name="Custom Support">
      <attributes>
        <lineage></lineage>
      </attributes>
      <hynode type="USER" name="CSR A">
        <attributes>
          <lineage>/Custom Support/</lineage>
          <sn>A</sn>
          <givenname>CSR</givenname>
          <samaccountname>csr_a</samaccountname>
          <displayname>CSR A Chief</displayname>
          <objectclass>
            <value>user</value>
            <value>organizationalPerson</value>
            <value>person</value>
            <value>top</value>
          </objectclass>
        </attributes>
      </hynode>
    </hynode>
  </hynode>
</IntegrationData>
```



```

        </objectclass>
        <userAccountControl>66050</userAccountControl>
    </attributes>
</hynode>
<hynode type="STATICLIST" name="All Users">
    <attributes>
<lineage>/AtHoc Users/Security Groups/</lineage>
<name>AtHoc Users</name>
<groupType>-2147483646</groupType>
<mail>AtHocUsers@athoc.com</mail>
<description />
<cn>AtHoc Users</cn>
    </attributes>
    <members>
<member type="USER">
    <samaccountname>jsmith</samaccountname>
</member>
<member type="USER">
    <samaccountname>ksmith</samaccountname>
</member>
<member type="STATICLIST">
    <cn>Engineering Users</cn>
</member>
<member type="STATICLIST">
    <cn>Sales and Marketing Users</cn>
</member>
    </members>
    </hynode>
</hynode>
</IntegrationData>

```

LDAP data adapter node descriptions

- **<IntegrationData>**: Top level node which contains all sub nodes.
- **<hynode>**: This node represents one of the following entities: TREE, STATICLIST, or USER. TREE nodes are hierarchy or group nodes. The STATICLIST node is for static distribution lists. The USER node is for a user. <hynode> can have other <hynode> nodes as children.
 - **<attributes>**: Each <hynode> node contains an <attributes> node. Attributes that were specified in the configuration file for each class type are found under the <attributes> node. The nodes under the <attributes> node are different based on configuration and type of hynode. See [LDAP class-based configuration](#) for instructions on how to specify attributes.
 - **<members>**: The <members> node is usually present for <hynode type="STATICLIST">. When present, this node has one or many <member> sub nodes which can have type="USER" or type="STATICLIST" to denote if the members of this list are users or other nested lists.

LDAP connection parameters

<adParameters>: The <adParameters> node is used to configure connection to the LDAP directory and has the following structure:

```

<adParameters>
    <server>LDAP_server[:port]</server>
    <username>username</username>
    <!--<password isEncrypted="true">CipherText</password>-->
    //After first run below will change to this
    <password>ClearText</password> //First run

```

```

<authentication>
  Anonymous | Delegation | Encryption | FastBind |
  None | ReadonlyServer | Sealing | Secure |
  SecureSocketsLayer | ServerBind | Signing
</authentication>

<search>
  <pagingMode>none | paging</pagingMode>
</search>

<rootNodeDistinguishedName>
  LDAP Distinguished Name
</rootNodeDistinguishedName>
</adParameters>

```

LDAP connection parameter node descriptions

- **<server>**: An optional IP address or the LDAP server name. This field can be blank. If blank, the synchronization module searches the default domain controller. For an SSL-secured LDAP, you must specify the fully-qualified domain name of the LDAP server.

Specifying the port is optional. By default, the LDAP service port is 389 and the SSL-secured LDAP service port is 636.

- **<username>**: The username of the account that accesses the LDAP server. If the server is not specified, the username is ignored. For an SSL-secured LDAP server, you must specify a fully-qualified user DN (FQDN). For example, CN=User Common Name,OU=Admin Accounts,DC=SomeDomain,DC=com.
- **<password>**: The password of the user account that accesses the LDAP server. If the server is not specified, the password is ignored.
- **<isEncrypted>**: If the password is encrypted, its value is "true", otherwise it is "false". The default is "false".
 - If the <isEncrypted> attribute is missing, the application assumes that the provided password is in clear text. The application encrypts the password and adds the <isEncrypted> attribute with the value "true."
 - If the <isEncrypted> attribute is set to true, the application assumes that the password is already encrypted and does nothing.
 - If the <isEncrypted> attribute is set to "false", the application assumes that the password is in clear text and encrypts it. The application encrypts the password and sets the <isEncrypted> attribute to "true" and replaces clear text with cipher text.
- **<authentication>**: (Optional) A combination of authentication types used to access the LDAP server. It can be a combination of the following types (case-insensitive):
 - Anonymous
 - Delegation
 - Encryption
 - FastBind
 - None
 - ReadonlyServer
 - Sealing
 - Secure
 - SecureSocketsLayer
 - ServerBind
 - Signing

The authentication type defaults to "Secure." When using a combination of multiple types, use a pipe (|) to separate them. For example, "Secure | FastBind".

Common use case

- For standard Microsoft Active Directory operations, it is not necessary to specify the authentication type.
- For SSL-secured LDAP, use "SecureSocketsLayer".
- **<search>**: (Optional) Specifies LDAP query-related parameters. Currently, there is only one parameter.
- **<pagingMode>**: Specifies how to use paging control in an LDAP search. Select from the following modes (case-insensitive):
 - **None**: Does not use pagination. This mode is usually for a Sun Directory, which does not support a paged result control. This mode depends on the size limit configuration of the LDAP server. If this limit is less than the number of items in one single OU, the LDAP module obtains items up to the server size limit.
 - **Paging**: This mode is for all LDAP servers that support a paged result search control (OID: 1.2.840.113556.1.4.319.) This is the default and preferred mode and should be used for Microsoft Active Directory.
- **<rootNodeDistinguishedName>**: The distinguished name of the LDAP entry that corresponds to the hierarchy root node. If it is missing or blank, the sync module obtains the hierarchy from the root of the LDAP directory.

LDAP class-based configuration—<classConfig>

Important: The attribute used to map to the login_id field must have memberExport="true". The User Sync Client uses the login_id as the primary key to map users and distribution lists. You must have memberExport="true" for the LDAP attribute that you intend to use as the login_id.

<classConfig>: This node is used for mapping LDAP node types and BlackBerry AtHoc hierarchy node types. The LDAP data adapter produces one of the three node types: USER, TREE, and STATICLIST.

To view the sample output generated by the LDAP data adapter, see `samples/ldap/sample-output-LDAP-data-adapter.xml` in the User Sync Client installation folder.

The following example shows the structure of the <classConfig> node:

```
<!-- CLASS CONFIG

To map the LDAP object of the given object class to a BlackBerry AtHoc entity,
user, or tree; to define which LDAP attributes of a given object class are
returned.

Attributes
objectClass    : LDAP object class
type           : BlackBerry AtHoc entity type; could be "USER" or "TREE"
nameAttribute  : Specify the value of the LDAP attribute to
                  be used as the name in resulting hierarchy.
-->

<classConfig>

  <class objectClass="user" type="USER">
    <attributes>
      <!--login_id-->
      <attribute memberExport="true">samaccountname</attribute>
      <!--last name-->
      <attribute>sn</attribute>
      <!--first name-->
      <attribute>givenname</attribute>
      <!--display name-->
      <attribute>displayname</attribute>
      <attribute>userAccountControl</attribute>
      <attribute multiValued="true">objectclass</attribute>
    </attributes>
```

```

</class>
<class objectClass="group" type="STATICLIST">
  <attributes>
    <attribute memberExport="true">cn</attribute>
    <attribute>name</attribute>
    <attribute>description</attribute>
  </attributes>
</class>

<class objectClass="*" type="TREE" />

</classConfig>

```

<class>The **<class>** sub node under **<classConfig>** is used to map a specific objectClass in LDAP to one of the USER, STATICLIST, or TREE nodes in the output produced by the LDAP data adapter. To map a specific objectClass, set the value of the objectClass attribute to the object classes defined in LDAP. Specify the LDAP data adapter type in the type attribute. For example, **<class objectClass="user" type="USER">** maps users in LDAP to the USER node in the LDAP data adapter output.

The **<class>** node has following sub node:

<attributes>: This sub node is used to encapsulate the attributes that you want to fetch for that object class from LDAP. You can have multiple **<attribute>** sub nodes under the **<attributes>** node. Each **<attribute>** node specifies one LDAP attribute to fetch. The optional "multiValued" attribute specifies returning multiple values for this LDAP attribute. The optional "memberExport" attribute indicates that the current attribute should be exported as a static list member's attribute.

The configuration code shown above directs the synchronization module to map LDAP users to user nodes and map all other LDAP entries to tree nodes.

This section also defines the custom LDAP attributes that need to be fetched and placed in the output XML of the LDAP data adapter.

LDAP Hierarchy-based configuration—<hierarchyConfig>

The **<hierarchyConfig>** node contains search filter definitions to create search filters for LDAP searches and transform definitions that direct the LDAP data adapter to transform the resulting hierarchy tree. The following XML segment shows an example hierarchy configuration:

```

<!-- Hierarchy-based configuration example -->
<hierarchyConfig>
  <filters>
    <filter type="xxx" inheritable="true">...</filter>
    <filter type="xxx" inheritable="false">...</filter>
    <filter type="xxx" inheritable="true">...</filter>
  </filters>
  <transforms>
    <transform type="xxx" inheritable="true">...</transform>
    <transform type="xxx" inheritable="false">...</transform>
  </transforms>
  <node name="IT Department">
    <filters>
      <filter type="xxx" inheritable="false">...</filter>
    </filters>
    <transforms>
      <transform type="xxx" inheritable="true">...</transform>
    </transforms>
    <node name="Web Team">
      <filters>
        <filter type="xxx" inheritable="false">...</filter>

```

```

    </filters>
    <transforms>
      <transform type="xxx" inheritable="true">...</transform>
    </transforms>
  </node>
</node>
</hierarchyConfig>

```

<hierarchyConfig>: The <hierarchyConfig> node corresponds to the hierarchy root entry that is specified in the <adParameters> section. Each <node name="xxx"> corresponds to one of the LDAP root entry's descendants whose common name is "xxx." The hierarchy relationship between these nodes is defined by their relative position in the XML. The "name" attribute of each node should be the same as the common name of the corresponding LDAP entry. Tree branches can be missing, but if any child node appears in this hierarchy configuration, the tree path to the root node should be complete and the same as it is in the LDAP directory.

Each node can have its own filter and transform definitions which are placed in the tags <filters> and <transforms>. Do not copy the entire LDAP tree into this configuration section and define specific filters and transforms for all nodes. This configuration section is inheritance-based. By setting the appropriate attribute value, any filter or transform defined in any node can be inherited by its child nodes, and they take effect if they are applicable for a specific child node.

You should define non-inheritable, node-specific <filters> and <transforms> but define common <filters> and <transforms> in a high-level node and apply them throughout its sub-tree.

Search filter definitions

The start tag of the filter definition is <filter>. Filters are used directly to create an LDAP search filter which searches for direct child nodes of the current node. Filters exclude unnecessary LDAP entries such as printers, computers, and contacts. There are three types of filters: attribute, date, and LDAP.

Filter examples

```

<filters>

  <!-- Filter 1 -->
  <filter type="attribute" target="objectclass" inheritable="true">
    <include>
      <value>user</value>
      <value>organizationalUnit</value>
      <value>container</value>
      <value>group</value>
    </include>
    <exclude>
      <value>computer</value>
    </exclude>
  </filter>
  <!-- Filter 2 -->
  <filter type="attribute" target="name" inheritable="true">
    <include>
      <value>*</value>
    </include>
    <exclude>
      <value>Computers</value>
    </exclude>
  </filter>

  <!-- Filter 3 -->
  <filter type="attribute" target="name" inheritable="false">

```

```

    <exclude>
      <value>DB Servers</value>
      <value>Web Servers</value>
    </exclude>
  </filter>

  <!-- Filter 4 -->
  <filter type="date" target="wheneverchanged" inheritable="true">
    <applicableClasses>
      <class>user</class>
    </applicableClasses>
    <from>7/1/2017</from>
    <to>07/18/2017</to>
    <within>1</within>
  </filter>

  <!-- Filter 5 -->
  <filter type="LDAP" appliedClass="group" inheritable="true">
    <!-- Include exchange enabled group only -->
    <![CDATA[
      (&
      (mail=*)
      (!msexchhidefromaddresslists=TRUE)
      )
    ]]> </filter>
</filters>

```

Each filter has two mandatory XML attributes: “type” and “inheritable,” and one optional attribute.

- **<type>**: Identifies the type of the filter. The possible values are: attribute, date, and LDAP.
- **<inheritable>**: Determines if the filter is inherited by child nodes. The value can be “true” or “false.” If a filter is set to inheritable=“true”, it will be run on the rootDistinguishedNode and all sub nodes. If it is set to “false”, it will only be run on the rootDistinguishedNode.
- **<appliedClass>**: Specifies the LDAP object class to apply the current filter on. If no class is specified, the filter applies to all object classes. For example, to run a filter on user objects and not have the filter apply to group objects, set appliedClass=“user”.

Attribute filter

The applicable targets of the attribute filter are attributes of LDAP entries. Every LDAP entry (including user, organizational unit, container, group, and contact) has a set of attributes which store information for the entry. The attribute sets can vary among different LDAP entries.

The attribute filter has an XML attribute named “target” which identifies the attribute of the LDAP entry which the filters are applied to. The value of “target” must be the exact name of one of the LDAP entry’s attributes. If the name is different, the filter does not take effect.

Identify the set of LDAP attributes using the in-package `AdTools.exe` utility application. For the synchronization process, the most useful LDAP attributes are “name” and “objectclass.”

The XML definition of the attribute filter can have two subsections, `<include>` and `<exclude>`, which define several `<value>` nodes by themselves.

The `<include>` section identifies the child LDAP nodes whose target attribute (with defined values) are included in search results. Note that the value “*” is a wildcard that means any value. A missing or empty `<include>` section includes all values by default. Empty values such as `<value></value>` are ignored.

The <exclude> section has the reverse effect of the <include> section. The <exclude> section identifies the child LDAP nodes whose "target" attribute (with defined values) are excluded. The value "*" means has no meaning in this context. However, if the value "*" is defined or inherited in the <include> section, defining "*" in the <exclude> section triggers the removal of the value "*" from both the <include> and <exclude> sections. A missing or empty <exclude> section, or no value defined, excludes nothing. Empty values are ignored.

During sync processing for one node, before applying "attribute" filters, all applicable "attribute" filters (either defined in this node or inherited from parents) with the same targeted LDAP attribute are merged to eliminate redundant and conflicting value definitions.

The following are example XML segments.

- **Filter 1** includes the LDAP entry whose "objectclass" (a type of LDAP entry) values are: "user", "container", "organizationalUnit" and "group". Currently, only the tree node (organizationalUnit, container), and user and group (static list) are synchronized, so all LDAP entries of other types are excluded in the resulting hierarchy tree. Filter 1 is inheritable, so it applies to all child nodes.

```
<!-- Filter 1 -->
  <filter type="attribute" target="objectclass" inheritable="true">
    <include>
      <value>user</value>
      <value>organizationalUnit</value>
      <value>container</value>
      <value>group</value>
    </include>
    <exclude>
      <value>computer</value>
    </exclude>
  </filter>
```

- **Filter 2** includes an LDAP entry whose value of "name" (common name) can be any value except "Computers." This filter is inheritable, so all LDAP entries with the name "Computers" are excluded. This filter may be useful if many nodes have a subentry whose name is "Computers".

```
<!-- Filter 2 -->
  <filter type="attribute" target="name" inheritable="true">
    <include>
      <value>*</value>
    </include>
    <exclude>
      <value>Computers</value>
    </exclude>
  </filter>
```

- **Filter 3** is not inheritable. This filter excludes a child entry with the name "DB Servers" or "Web Servers" under the current LDAP node.

```
<!-- Filter 3 -->
  <filter type="attribute" target="name" inheritable="false">
    <exclude>
      <value>DB Servers</value>
      <value>Web Servers</value>
    </exclude>
  </filter>
```

- **Filter 4** is a date filter. This filter can apply to any <date> type LDAP attribute. The XML definition of the date filter can have two or three subsections: <applicableClasses>, <from> and <to>, or <within>.

<applicableClasses>: Defines the LDAP object classes the date filter is applied to.

<from> and **<to>**: Define the start date and end date of the filter.

If **<from>** and **<to>** do not exist, define a **<within>** tag and specify a number of days. This creates a date range from the specified number of previous days until today.

```
<!-- Filter 4 -->
  <filter type="date" target="whenchanged" inheritable="true">
    <applicableClasses>
      <class>user</class>
    </applicableClasses>
    <from>7/1/2007</from>
    <to>07/18/2007</to>
    <within>1</within>
  </filter>
```

- **Filter 5** is an LDAP filter. This type of filter enables defining a pure LDAP filter string and using it during the search process. It provides the most flexible and powerful way to define filters. LDAP filters can achieve the goals of all other filters, but this requires understanding LDAP.

```
<!-- Filter 5 -->
  <filter type="LDAP" inheritable="true">
    <!-- Exclude All Disabled Users -->
    <![CDATA[
      (!(samaccounttype=268435456))
    ]]>
  </filter>
```

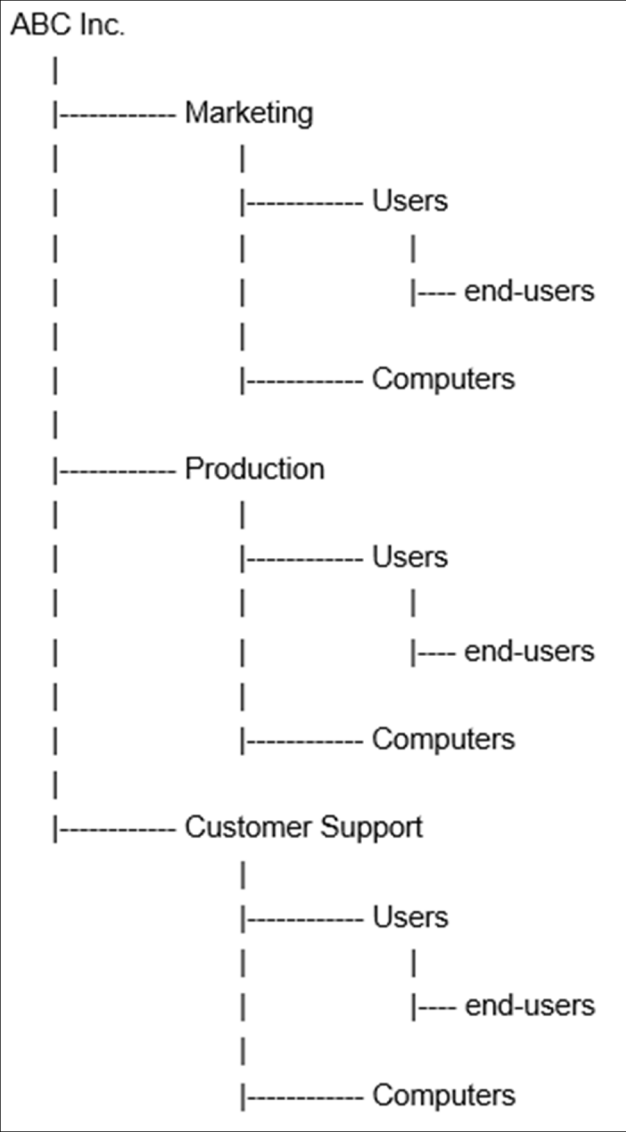
Transform definitions

The start tag of the transform definition is **<transform>**. Transforms are applied to the hierarchy tree resulting from the fetching and filtering process. The purpose of transforms is to alter the tree structure to make it compatible with the BlackBerry AtHoc system. There are two types of transforms: "move" and "delete." "Move" changes the parent node of specified node. "Delete" removes specified sub-trees.

```
<!-- Transform Examples -->
<transforms>
  <!-- Transform 1 -->
  <transform type="move" inheritable="true">
    <target>Users/*</target>
    <destination>.</destination>
  </transform>
  <!-- Transform 2 -->
  <transform type="delete" inheritable="true">
    <target>Users</target>
  </transform>
</transforms>
```

<transform>: Has the "inheritable" attribute (as does **<filter>**.) Using this attribute enables the sync module to transform much of the common structure of sub-trees. Defining only one **<transform>** and making it non-inheritable will transform the sub-tree of a specified node.

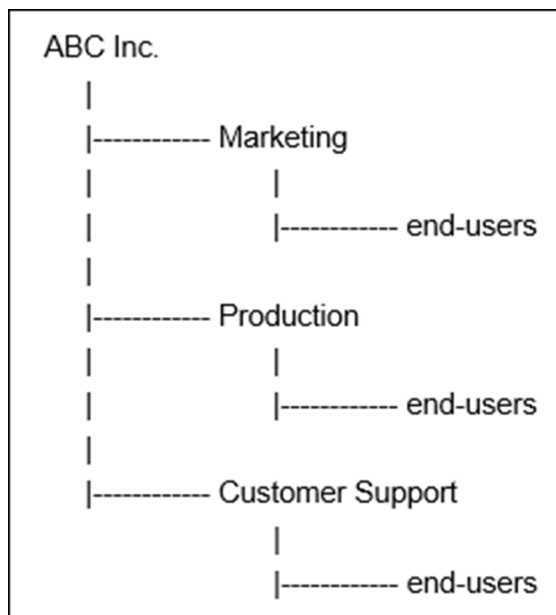
Many LDAP administrators are likely to create common organizational structures in all LDAP branches. The following is a sample organizational structure:



The ABC Inc. has three departments: Marketing, Production, and Customer Support. In each department, there are two sub-nodes which contain all computers and users, respectively. For synchronization purposes, place all users directly under the department nodes they belong to. Use a filter to exclude the unnecessary “Computers” node. Use transforms to make the end user nodes compatible with the BlackBerry AtHoc system.

Transform 1 in the example above moves all end user nodes under the “Users” nodes to the appropriate department nodes.

Transform 2 cuts off empty “Users” nodes. After filtering and transforming, the resulting tree is shown below:



In the <transform> definition, the <target> tag defines the nodes this transform are applied to. The inner text of the target element is a path-like string. It is a relative path starting from the current node. If no target is found, the transform does not take effect.

Assume Transforms 1 and 2 are defined in the “ABC Inc” node. When the process reaches the department nodes, Marketing, Production, and Customer Support, the inherited Transform 1 finds the target node “Users.” It then moves all child nodes of “Users” to the appropriate nodes defined by the <destination> element.

The <destination> element contains a path-like string, but it is a relative path starting from the parent nodes of the targeted nodes. In the transform’s path definition, “*” means everything, including all nodes. “..” means go up one level. Any other string is considered a regular expression that matches node names.

The delete <transform> has only a target element and it removes targeted nodes from the hierarchy tree.

Transforms take effect in order of declaration, from top to bottom and from parent to child. You must define them in a specific order to obtain the expected result. In the above example, if Transform 2 is before Transform 1, it will remove all “Users” nodes with all their end user nodes before Transform 1 takes effect.

Tip: A regular expression in a <transform> definition should always start with ^ and end with \$. Do not use the “/” character in the expression.

CSV data adapter configuration

The CSV data adapter takes configurations as an input and produces an output XML file that can be consumed by the data processor. The sample directory contains a sample CSV data adapter output XML file.

CSV data adapter sample output XML

The CSV data adapter generates output similar to the following example. Each output node is described after the example.

Note: The output is dependent on the configuration of the CSV data adapter. The following example output shows only the general structure.

```

<IntegrationData from="CsvDataAdapter">
  <users>
    <user>
  
```

```

<Username>jdoe</Username>
<Firstname>John,Firstname</Firstname>
<Lastname>Doe'Lastname</Lastname>
<OrgH>/USA/</OrgH>
<Date>01/11/2019</Date>
<DateTime>01/11/2018 11:11:59</DateTime>
<AllUsers>Yes</AllUsers>
</user>
<user>
  <Username>Janedoe</Username>
  <Firstname>Jane</Firstname>
  <Lastname>Doe</Lastname>
  <OrgH>/Germany/</OrgH>
  <Date>01/11/2019</Date>
  <DateTime>01/11/2018 11:11:59</DateTime>
  <AllUsers>Yes</AllUsers>
</user>
</users>
</IntegrationData>

```

<IntegrationData>: This is a root node in the output XML. It has following sub nodes:

- **<users>**: This node represents all users that were read from .csv files. There is a separate <user> node in the <users> node for each user.
- **<user>**: This node encloses other attributes for users. It can have one or many nodes as defined in the CSV data adapter configuration file. Each child node is one of the columns defined in the <csvColumns> node in the CSV data adapter configuration file.

CSV data adapter configuration details

The structure of CSV data adapter configuration is defined below.

```

<dataAdapter assembly="AtHoc.DataIntegration.dll"
class="AtHoc.DataIntegration.Adapter.CSV.CsvDataAdapter" enable="true">

  <!-- CSV configuration goes here -->
  <skipFirstLines>1</skipFirstLines>

  <delimiter>,</delimiter>
  <!-- Supported .csv file encoding formats are: UTF8, UTF8-BOM, or WIN1252.
The default is WIN1252. Optional-->
  <encoding>WIN1252</encoding>

  <readFolder>C:/tmp/</readFolder>

  <!-- Enable below line and specify path if processed files need to be
moved to a different location: Optional -->

  <!--<processedFolder>C:/tmp/processedFolder/</processedFolder>-->
  <!-- Column names in the order they are presented in the CSV -->
  <csvColumns>
    <csvColumn>Username</csvColumn>
    <csvColumn>Firstname</csvColumn>
    <csvColumn>Lastname</csvColumn>
    <csvColumn>OrgH</csvColumn>
    <csvColumn>Date</csvColumn>
    <csvColumn>DateTime</csvColumn>
    <csvColumn>AllUsers</csvColumn>
  </csvColumns>

```

```
</dataAdapter>
```

- **<skipFirstLines>**: This node specifies the number of lines to exclude from the .csv file while processing data. Set this value to 1 if the input .csv file contains headers. If the headers are spread over multiple lines, set this value to the number of lines that are used for headers.
- **<delimiter>**: This node specifies the delimiter used in the .csv file. The default value is comma (.). However, files with other delimiters are also supported. For example, the pipe (|) symbol.
- **<encoding>**: (Optional) This node specifies the encoding format of the .csv file. If not specified, the client assumes that the encoding of the .csv files is Windows1252. The other supported formats are UTF8 and UTF8-BOM. Only one encoding format can be specified.
- **<readFolder>**: Absolute path of the folder where the .csv files are located. The .csv data adapter can process all files present in a folder. You should keep only .csv files in this folder.
- **<processedFolder>**: (Optional) If specified, once the files are processed by the data adapter, they are moved to this location. The value must be an absolute path.
- **<csvColumns>**: The ordered list of user-defined names for columns to use as node names in the resulting XML file. This node has the following sub node:
 - **<csvColumn>**: The node name in the resulting XML file. You should keep this name simple and without spaces or special characters. Consider using a name that is a valid name for XML nodes. You will need this node name when writing the XSL for the data processor.

Data processor configuration

The configuration section for the XSLT data processor has only one tag, `<xslt>`, to provide the information about the XSLT source. Place the file name in the href attribute to provide an external XSLT file. Alternatively, specify XSL code in the `<xslt>` tag.

The XSLT provided transforms XML from the data adapter into the XML used by the data synchronizer. All data mapping rules are implemented in the XSLT data processor. See the `Sample.xsl` file provided in the sample folder for each data source.

LDAP data processor

The LDAP data processor configuration uses an XSL file to transform the output from the LDAP data adapter to the output expected by the data synchronizer. The example output of the data adapter, sample XSL file, and sample output from LDAP data processor are provided in the sample folder. You must write an XSL file which transforms the output from the LDAP data adapter to XML that can be consumed by the data processor.

Sample LDAP data processor output

The following is sample output produced by the LDAP data processor:

```
<!-- lastName is optional -->
<lastName>A</lastName>
<!-- enabled is optional -->
<enabled>N</enabled>
<!-- customFields, optional -->
<customFields>
<field commonName="PIN">1234</field>
<field commonName="NUMBER1_CN">94010</field>
</customFields>
<!-- Device address, optional -->
<devices>
<device commonName="workEmail">mail_test@athoc.com</device>
```

```

<device commonName="workPhone">650-111-0000</device>
</devices>
</user>
</users>
<staticlists>
  <list seqId="1" commonName="StaticDl5">
    <name>StaticDl5</name>
    <description></description>
    <members>
      <user login_id="csr_a" />
    </members>
  </list>
</staticlists>
</IntegrationData>

```

LDAP data processor node descriptions

<IntegrationData>: This is a root node of the output file. The <integrationData> node has the following sub nodes:

- **<hierarchy>**: This node contains hierarchy node details. It has a <hynode> sub node for each level of hierarchy.
- **<users>**: This node contains user definitions. Under this node is a <user> node which represents one user that needs to be synchronized.
 - **<user>**: This node represents each node that will be synchronized. The following sub nodes can be present under the <user> node:
 - **<login_id>**: The XSLT must produce this mandatory node. The value of this node is a username of the user to be matched against the username in the BlackBerry AtHoc system.
 - **<lineage>**: (Optional) This node represents a membership in an organizational hierarchy. This node must be present when assigning a user to an organization hierarchy. The value of this node is the path of the organization hierarchy.
 - **<displayName>**: (Optional) When provided, the value is the display name for a user.
 - **<firstName>**: (Optional) When provided, the value is the first name of the user.
 - **<lastName>**: (Optional) When provided, the value is the last name of the user.
 - **<enabled>**: (Optional) Values are "Y" or "N". "Y" means the user should be created as an enabled user. "N" means the user should be created as a disabled user.
 - **<customFields>**: (Optional) The sub nodes of this node represent each attribute to synchronize. The sub node should be in the following format: `field commonName="common name of attribute">Value of attribute</field>`.
 - **<devices>**: (Optional) The sub nodes of this node represent each device to synchronize. The sub node should be in the following format: `<device commonName="common name of device">value of device</device>`.
- **<staticlists>**: This node contains definitions for static distribution lists. It has the following sub nodes:
 - **<list>**: This node represents one static list. The commonName attribute of this node is the common name of the static distribution list in the BlackBerry AtHoc system. The <list> node has following sub nodes:
 - **<name>**: Name of a static distribution list.
 - **<description>**: Description of a static distribution list.
 - **<members>**: The node that represents members. Members can be users or other distribution lists.

CSV data processor

The CSV data processor configuration takes an XSL file to transform the output from the CSV data adapter to output expected by the data synchronizer. Example outputs of the data adapter, sample XSL file, and sample

output from the CSV data processor are provided in the sample folder. You must write an XSL file which transforms the output from the LDAP data adapter to XML that can be consumed by the data processor.

The following example shows the structure of a sample output that must be generated by the data processor XSL transformation.

Sample CSV data processor output

```
<IntegrationData from="XsltDataProcessor">
  <users>
    <user seqId="1">
      <login_id>jdoe</login_id>
      <mapping_id>jdoe</mapping_id>
      <firstName>John,Firstname</firstName>
      <lastName>Doe'Lastname</lastName>
      <lineage>/India/</lineage>
      <Date>01/11/2019</Date>
      <DateTime>01/11/2018 11:11:59</DateTime>
      <customFields>
        <field commonName="CheckboxAttr">Yes</field>
      </customFields>
      <devices>
        <device commonName="WORKEMAIL"></device>
      </devices>
      <lists>
        <list commonName="test">Yes</list>
      </lists>
    </user>
    <user seqId="2">
      <login_id> </login_id>
      <mapping_id> </mapping_id>
      <firstName>John,Firstname</firstName>
      <lastName>Doe'Lastname</lastName>
      <lineage>/India/</lineage>
      <Date>01/11/2019</Date>
      <DateTime>01/11/2018 11:11:59</DateTime>
      <customFields>
        <field commonName="CheckboxAttr">Yes</field>
      </customFields>
      <devices>
        <device commonName="WORKEMAIL"></device>
      </devices>
      <lists>
        <list commonName="test">Yes</list>
      </lists>
    </user>
  </users>
</IntegrationData>
```

CSV data processor node descriptions

<IntegrationData>: This is a root node of the output file. It has the following sub nodes:

<users>: This node contains definitions for a user. Under this node is a <user> node which represents one users that needs to be synchronized.

<user>: This node represents each node that will be synchronized. The following sub nodes can be present under the <user> node:

- **<login_id>**: The XSLT must produce this mandatory node. The value of this node is a username of a user that will be matched against a username in the BlackBerry AtHoc system.
- **<lineage>**: (Optional) This node represents a membership in an organizational hierarchy. This node must be present when assigning a user to an organization hierarchy. The value of this node is the path of the organization hierarchy.

Note: To import the organization hierarchy user attribute, the <hierarchy> section must be enabled (uncommented) under the <syncOperations> section in the AtHocDataIntegration.config file.

- **<displayName>**: (Optional) When provided, the value is the display name of the user.
- **<firstName>**: (Optional) When provided, the value is the first name of the user.
- **<lastName>**: (Optional) When provided, the value is the last name of the user.
- **<enabled>**: (Optional) Values are “Y” or “N”. “Y” means the user should be created as an enabled user. “N” means the user should be created as a disabled user.
- **<customFields>**: (Optional) The sub nodes of this node represent each attribute to synchronize. The sub node should be in the following format: <field commonName="common name of attribute">Value of attribute</field>.
- **<devices>**: (Optional) The sub nodes of this node represent each device to synchronize. The sub node should be in the following format: <device commonName="common name of device">value of device</device>.
- **<lists>**: This node can contain one or more <list> sub nodes that represents a distribution list.

<list>: Represents one list. CommonName is the commonName of a static distribution list in the BlackBerry AtHoc system. The value is either “Yes” or “No”. “Yes” means the user should be added as a member of this list. “No” means the user should be removed.

Tip: You can use XSLT to create customized lineage from LDAP attributes. In addition to mapping LDAP attributes to BlackBerry AtHoc custom fields, you can translate LDAP attribute values into other values recognized by the BlackBerry AtHoc software.

Data synchronizer configuration

The User Sync Client uses web API, which is protected using the OAuth2 protocol. Before making configuration changes to the sdkParameters section, you must provision the BlackBerry AtHoc web API client as described in the [Provision the BlackBerry AtHoc API client](#) section. After provisioning the API client, the sdkParameters section looks like the example in the [sdkParameters section](#).

sdkParameters section

This section describes parameters that are required to interface with the BlackBerry AtHoc API. Although this section does not use the SDK, it is named sdkParameters for legacy reasons.

```
<sdkParameters>
  <orgCode><![CDATA[orgCode]]></orgCode>
  <url>https://AtHocServer</url>
  <username>username</username>
  <password>password</password>
  <syncSource>AD</syncSource>
  <clientId>you get this after provisioning</clientId>
  <clientSecret isEncrypted="false">You get this after provisioning</
clientSecret>
  <!-- Configuration for client certificate: Optional-->
  <clientCertificate>
    <!-- The subject of the certificate: Optional-->
    <subject></subject>
```

```

    <!-- The store name where the cert resides, either:
    ROOT, TRUSTEDPEOPLE, TRUSTEDPUBLISHER, AUTHROOT, CERTIFICATEAUTHORITY, MY-->
    <storeName></storeName>
    <!-- The cert store location, either: LOCALMACHINE or CURRENTUSER-->
    <storeLocation></storeLocation>
  </clientCertificate>
</sdkParameters>

```

Field descriptions

- **<orgCode>**: The organization code that you set up in the BlackBerry AtHoc management system in the General Settings.
- **<url>**: The URL of the BlackBerry AtHoc server.
- **<username>**: The BlackBerry AtHoc username used to send web API requests.
- **<isEncrypted>**: If the password is encrypted, its value is "true", otherwise it is "false". The default is "false."
- **<password>**: The BlackBerry AtHoc password used to send web API requests.
- **<syncSource>**: Required for static list synchronization. The synchronization source must be predefined in the BlackBerry AtHoc system.
- **<clientId>**: Unique identifier for your LDAPSvc client after the provisioning step.
- **<clientSecret>**: OAuth2 client secret that is returned after you provision the LDAP Sync client. Do not share this secret.
- **<clientCertificate>**: (Optional) This node is required if you want to append certificates in data sync requests. This node has following sub nodes:
 - **<subject>**: (Optional) Subject of the specific certificate that you want to use.
 - **<storeName>**: (Optional) The name of the certificate store.

Behavior

- If the **<isEncrypted>** attribute is missing, the application assumes that the provided password is in clear text. The application encrypts the password and adds the "isEncrypted" attribute with the value "true."
- If the **<isEncrypted>** attribute is set to "true," the application assumes that the password is already encrypted and does nothing.
- If the **<isEncrypted>** attribute is set to "false," the application assumes that the password is in clear text and encrypts it. The application encrypts the password and then sets the **<isEncrypted>** attribute to "true" and replaces clear text with cipher text.
- If the **<clientCertificate>** block is missing, the application does not append any certificate to the data synchronization request.
- If the **<subject>** block is missing or empty, the application appends all certificates to the data synchronization request.
- If the **<storeName>** block is missing or empty, the application uses the default store ("CERTIFICATEAUTHORITY") to look for certificates.
- If the **<storeLocation>** block is missing or empty, the application uses the default location ("LOCALMACHINE") to look for certificates.

Sync operation configuration

This section configures the data synchronizer.

```

<syncOperations>
  <hierarchy>
    <commonNameOfHierarchyToSync>Userbase_Hierarchy_Common_Name</
commonNameOfHierarchyToSync>

```



```

</hierarchy>
<user>
  <allowPartialUpdate>TRUE</allowPartialUpdate>
  <syncExistingUserOnly>>true</syncExistingUserOnly>
  <usersPerPackage>5000</usersPerPackage> <!--set it to 5000-->
</user>
<staticlist>
  <newListDefaultFolder>/folder_of_distribution_list_hierarchy/</
newListDefaultFolder>
</staticlist>
<isFullSync>>true</isFullSync>
</syncOperations>

```

In this section, there are two possible subsections, <hierarchy> and <user>, that provide control information for hierarchy synchronization and user synchronization operations.

- **<hierarchy>**: The <hierarchy> section has only one sub node, <commonNameOfHierarchyToSync>. This sub-node defines the common name of the target hierarchy in the current provider. This common name must be specified in the BlackBerry AtHoc system before synchronization.

To find the common name, go to **Settings > User Attributes** and find the Path type attribute in the list. The default attribute is called "Organization Hierarchy" and has a common name of "ORGANIZATION HIERARCHY".

- **<user>**: The <user> section has the following three sub nodes:
 - **<allowPartialUpdate>**: (Optional) Indicates if the user sync can be performed for partial updates.
 - **<syncExistingUserOnly>**: Indicates if the Web API should synchronize existing BlackBerry AtHoc users only. If this tag is missing, it defaults to "false", meaning that all users are synchronized.
 - **<usersPerPackage>**: Because the number of users to be synchronized can be very large, the synchronization module synchronizes users into multiple packages of a web API request. This parameter controls the number of users placed in one package, which depends on the API server's capacity. If this tag is missing, the number of users defaults to 5000.
- **<staticList>**: The <staticList> section has the following sub node:
 - **<newListDefaultFolder>**: (Optional) Specifies the hierarchy folder to insert newly created lists into. Defaults to "root". This is not applicable for .csv.
- **<isFullSync>**: (Optional) Indicates a full synchronization of distribution lists and distribution list membership. The default value is "true."

Note: The value "true" is case-sensitive. If "TRUE" or "True" are entered instead of "true," the system treats the value as "false."

Tip: If you do not want to synchronize the hierarchy, remove the <hierarchy> section.

Tip: To test the configuration, execute only one or two of the three functional parts of the integrator. Remove the configuration section of the unwanted part.

Synchronize LDAP groups

1. Include the group objectClass in the LDAP search filter. Refer to the sample configuration file for details. To synchronize only Microsoft Exchange-enabled groups (Outlook groups), add a special filter which can be found in the sample configuration file.
2. Define the class configuration in the classConfig section. A sample configuration can be found in the sample configuration file.
3. Modify the XSLT to transform group data into the group sync data format. See the `Sample.xsl` sample XSLT file for details.

4. Specify the synchronization source under the `sdkParameters` node. Include the `staticList` synchronization section and specify the appropriate values.

How to synchronize users for enterprise user moves

To support enterprise user move with the User Sync Client, a new “User-Organization” attribute was added. You must enter the name of the organization that you want to add the user to in the “User-Organization” attribute. The enterprise user move feature is available on enterprise organizations with suborganizations and super enterprise organizations with sub enterprises and suborganizations. You can define how you want to do the mapping. You can write a template in an XSL which can have different xsl: if, or xsl:choose conditions. Before using the Enterprise User Move feature, the enforce uniqueness feature must be turned on for the super enterprise or enterprise organization in the BlackBerry AtHoc management system.

The following is a sample XSL file:

```
<!-- Template for user node -->
<xsl:template match="//hynode[@type='USER']">
  <xsl:element name="user">
    <xsl:attribute name="seqId">
      <xsl:value-of select="position()"/>
    </xsl:attribute>
    <xsl:for-each select="attributes">
      <!-- Mandatory parameter do not comment this parameter-->
      <xsl:element name="login_id">
        <xsl:value-of select="'ATHOCDEVO\'"/>
        <xsl:value-of select="samaccountname"/>
      </xsl:element>
      <!-- Optional parameter -->
      <xsl:element name="mapping_id">
        <xsl:value-of select="'ATHOCDEVO\'"/>
        <xsl:value-of select="samaccountname"/>
      </xsl:element>
      <!-- Uncomment below line and modify condition if you want user to be move to specific VPS -->
      <xsl:element name="User-Organization">
        <xsl:call-template name="GetOrganizations">
          <xsl:with-param name="distinguishedName" select = "distinguishedName" />
        </xsl:call-template>
      </xsl:element>
    </xsl:for-each>
  </xsl:element>
</xsl:template>
```

How to bulk update users' physical location

You can use the BlackBerry AtHoc User Sync Client to bulk-update your organization's users physical addresses without the need to convert the addresses to the latitude,longitude or POINT(longitude latitude) format. The User Sync Client sends a query to the Bing geolocation API to calculate the longitude and latitude of the user's physical address provided in the input file. Only addresses that the Bing API returns with a match code of High Confidence or Good are processed and added to the database. The latitude,longitude and POINT(longitude latitude) formats are still supported.

To combine multiple address fields into a single field in the BlackBerry AtHoc database, use the ConcatenateFields attribute in the XSLT file. In the following example, the Street Address, City, Country, and Postal Code fields are combined and mapped to the Office Location field:

```
<xsl:element name="office-location">
    <xsl:call-template name="ConcatenateFields">
        <xsl:with-param name="elements" select="streetaddress|
city|country|postalcode" />
        <xsl:with-param name="separator" select="', '" />
    </xsl:call-template>
</xsl:element>
```

The following example shows the updates needed to the <dataAdapter> node in the AtHocDataIntegration.config file to bulk update users' physical addresses:

```
<dataAdapter assembly="AtHoc.DataIntegration.dll"
class="AtHoc.DataIntegration.Adapter.CSV.CsvDataAdapter" enable="true">
    <!-- CSV configuration goes here -->
    <skipFirstLines>1</skipFirstLines>
    <delimiter>,</delimiter>
    <readFolder>C:\temp\UserSyncClient</readFolder>
    <!-- Enable below line and specify path if processed files need to be
moved to a different location: Optional -->
    <!--<processedFolder>C:/tmp/processedFolder/</processedFolder>-->
    <!-- Column names in the order they are presented in the CSV -->
    <csvColumns>
        <csvColumn>Username</csvColumn>
        <csvColumn>streetaddress</csvColumn>
        <csvColumn>city</csvColumn>
        <csvColumn>country</csvColumn>
        <csvColumn>postalcode</csvColumn>
        <!-- <csvColumn>GeoLocation</csvColumn> -->
        <!-- <csvColumn>Multi-select-Picklist</csvColumn>
        <csvColumn>Phone-Work</csvColumn>-->
    </csvColumns>
</dataAdapter>
```

After the User Sync Client is executed to update users' physical locations, a preprocessor job performs the following functions:

- Checks for duplicate entries in the input XSLT and removes any duplicates before sending the request to the Bing API.
- Checks the database for existing addresses before sending the request to the Bing API. Existing addresses are not sent to the Bing API for processing.
- Sends the job to the Bing API for processing.

The preprocessor job runs automatically every 8 hours. The BlackBerry AtHoc management system makes three attempts to submit failed requests to the Bing API at 8 hour intervals.

The post processor job pings the Bing API every 4 hours to check the status of submitted jobs. If a job is complete, the postprocessor job performs the following functions:

- Gets the translated geolocations in latitude,longitude from the Bing API.
- Records the results in the database.
- Updates the Geocoding Summary and Logs settings page in the BlackBerry AtHoc management system.
- Sends an email to the operator who initiated the bulk update that provides the status of the update. This status includes the total number of records processed, records successfully processed, and the number of records that were not processed. The email contains a link to the Geocoding Summary and Logs settings page in the BlackBerry AtHoc management system.
- Adds a record of the update to the operator audit trail in the BlackBerry AtHoc management system.

The postprocessor job runs automatically every 4 hours. The BlackBerry AtHoc management system makes three attempts to download the postprocessor job at 4 hour intervals.

Note: For more information about the Geocoding Summary and Logs settings page, see "[View geolocation transactions and logs](#)" in the *BlackBerry AtHoc System Settings and Configuration* guide.

How to configure organization subscription with the User Sync Client and API

The SUBSCRIBED-ORGANIZATIONS attribute supports super enterprise or enterprise organization subscription with the user sync client and API. You must enter the common name of the organization that you want the user to subscribe to using the SUBSCRIBED-ORGANIZATIONS attribute.

The value to use for the SUBSCRIBED-ORGANIZATIONS attribute is the common name of the organization: `<ORG-OrganizationId>`. For example: `ORG-2050345`.

You can subscribe to a maximum of 10 organizations.

You can define how you want to do the mapping. You can write a template in an XSL which can have different `xsl:if`, or `xsl:choose` conditions.

Before using the Organization Subscription feature, the feature must be enabled, and suborganizations must be available for organization subscription. For more information, see "[Manage organization subscriptions](#)" in the *BlackBerry AtHoc Enterprise Features* guide.

The following is a sample XSL file:

```
<!-- Mandatory parameter do not comment this parameter-->
<xsl:element name="LOGIN_ID">
  <xsl:value-of select="'ATHOCDEVO\''"/>
  <xsl:value-of select="samaccountname"/>
</xsl:element>
<!-- Optional parameter -->
<xsl:element name="mapping_id">
  <xsl:value-of select="'ATHOCDEVO\''"/>
  <xsl:value-of select="samaccountname"/>
</xsl:element>
<!-- Uncomment below line and modify condition if you want user to be move to specific VPS -->
<xsl:element name="USER-ORGANIZATION">
  <xsl:call-template name="GetOrganizations">
    <xsl:with-param name="distinguishedName" select = "distinguishedName" />
  </xsl:call-template>
</xsl:element>
<!-- Uncomment the below element to sync user hierarchy data -->
<xsl:element name="lineage">
  <xsl:value-of select="lineage"/>
</xsl:element>
<xsl:element name="displayName">
  <xsl:value-of select="displayname"/>
</xsl:element>
<xsl:element name="firstName">
  <xsl:value-of select="givenname"/>
</xsl:element>
<xsl:element name="lastName">
  <xsl:value-of select="sn"/>
</xsl:element>
<!-- Uncomment below line and modify condition if you want to provide organization subscription for the users -->
<xsl:element name="SUBSCRIBED-ORGANIZATIONS">
  <!--the values for this attribute should be provided from input source (AD/CSV) in this format : ORG-ORGANIZATIONID, for example : ORG-2050338 -->
  <xsl:value-of select="OrganizationSubscription"/>
</xsl:element>
```

Troubleshoot the User Sync Client

Common error messages

- **Error:**

```
"Batch 3 : Error while calling api method for Users (Batch 3),#error:
{"Error":"An internal error occurred while processing the request."}"
```

- You may find errors in the diagnostics log table that say "There is a duplicate user in the organization" and it is clear from the stack trace that they were caused by the User Sync Client during a sync operation. The information does not specify which provider (organization) or user the errors originate from.
- Run a SQL to find duplicate users. Use the BlackBerry AtHoc management system to delete them. It is unknown how the duplicates got created.

- **Error:**

```
Error in log: [ERROR][domain\user][APIDataSynchronizer]: The user could not be
authenticated. Check configuration settings such as username, password, client
id, client secret, and org code
```

Check configuration settings such as username, password, client ID, client secret, and organization code. Typically the issue is in the sdkParameters section in the AtHocDataIntegration.config file.

- **Error:**

```
The underlying connection was closed: an unexpected error occurred on a receive
```

This error occurs when TLS is not configured correctly, or when an incompatible version of .NET is installed.

- **Error:**

```
Message = [AD-CREATE-DATE]: Invalid date value, it should be in the format: MM/
dd/yyyy HH:mm:ss
```

- For example, if the date and time formats that are set for the organization are MM/dd/yyyy HH:mm:ss and the values that are passed (as found in the dataProcessor.xml file) have single-digits like 1/16/2020 9:39:07. Those date and time entries need to be 01/16/2020 09:39:07.
- Ensure that the date and time format found in the dataProcessor.xml file match the settings for the organization.
- Do not include AM/PM in the time format.

- **Error:**

```
UserSync: Unexpected error while executing synchronizer.: Value cannot be null.
Parameter name: input
```

- The default sample.xsl file that the MSI puts in the root AtHoc User Sync Client folder is designed for use with AD import. When you are setting up a CSV sync, you must replace it with the copy from AtHoc User Sync Client\sample\CSV.
- For more information, see See KB 000058117.

- **Error:**

```
Exception encountered parsing file: System.Net.WebException: The underlying
connection was closed: Could not establish trust relationship for the SSL/TLS
```

```
secure channel. ---> System.Security.Authentication.AuthenticationException:
The remote certificate is invalid according to the validation procedure.
```

- This error indicates that there is an issue on the BlackBerry AtHoc server.
- The certificate in the server is either not valid or is not correctly configured for the domain and hostname.

- **Error:**

```
Exception encountered parsing file: System.Net.WebException: Unable to connect
to the remote server --> System.Net.Sockets.SocketException: No connection
could be made because the target machine actively refused it 10.0.0.1:80
```

- This error indicates that there is a configuration issue with the proxy server.
- Contact your IT team to check if the proxy server is working. Provide them with the IP address displayed in the error message.

- **Error:**

```
Exception encountered parsing file: System.Net.WebException: The remote server
returned an error: (407) Proxy Authentication Required.
```

This error indicates that your proxy is an authenticated proxy and you have not provided a proxy user ID and password, or the proxy user and password you provided is not correct.

- **Error:**

```
Exception encountered parsing file: System.Net.WebException: The remote name
could not be resolved: 'atdevdc0112.athocdevo.com'
```

- This error indicates that your proxy server name or the BlackBerry AtHoc server name could not be resolved.
- Your proxy server name or BlackBerry AtHoc server name provided in the AtHocDataInteration.config file might be incorrect.
- Check your proxy server name.

- **Error:**

```
Exception encountered parsing file: System.Net.WebException: The underlying
connection was closed: An unexpected error occurred on a send. --->
```

This error indicates that the BlackBerry AtHoc hostname is not correct or does not exist in the AtHocDataInteration.config file.

- **Error:**

```
System.IO.IOException: Unable to read data from the transport connection: An
existing connection was forcibly closed by the remote host. --->
```

This error indicates that the BlackBerry AtHoc hostname is not correct or does not exist in the AtHocDataInteration.config file.

- **Error:**

```
System.Net.Sockets.SocketException: An existing connection was forcibly closed
by the remote host at System.Net.Sockets.Socket.Receive(Byte[] buffer, Int32
offset, Int32 size, SocketFlags
```

This error indicates that the BlackBerry AtHoc hostname is not correct or does not exist in the AtHocDataInteration.config file.

- **Error:**

```
Exception encountered parsing file: FileHelpers.FileHelpersException: The
delimiter ',' can't be found after the field 'LastName' at line 2 (the record
has less fields, the delimiter is wrong or the next field must be marked as
optional).
```

This error indicates that the CSV file to be imported has fewer fields than are specified in the AtHocDataInteraction.config file. Correct your CSV file and the AtHocDataInteraction.config file.

API error response codes

The following table lists API response codes and how to resolve them.

Response code	Description	Steps to resolve
400	Bad Request	Check that the payload and its format are correct. Check for validation errors and take necessary actions to correct the payload.
401	Unauthorized	Make sure that the access token is present, correct, and not expired.
403	Forbidden	<ul style="list-style-type: none"> • The operator does not have sufficient operator permissions to execute the request. Log in to the BlackBerry AtHoc management system to modify the roles for the operator. • The password used is changed or expired. Generate a new authentication token.
404	Not Found	The resources you are trying to find are not present in the system. Pass valid parameters.
429	Too Many Requests	There is a restriction on the number of API calls allowed. Try the service again. If you continue to see this response code, contact your administrator and request that the API throttling limit be increased to allow the client to perform more requests.
500	Internal Server Error	Report this error to BlackBerry AtHoc customer support at athocsupport@blackberry.com.
503	Service Unavailable	The server is currently unable to handle the request due to a temporary overload or scheduled maintenance. Wait and try again.

Appendix A: Adtools.exe

`AdTools.exe` is a utility Windows application used to create, delete, and display LDAP hierarchies for the purposes of analyzing and testing the LDAP structure. It provides the functionalities described in the following sections through its main menu.

Set LDAP Info

This menu command opens a window that enables users to modify LDAP information including the server, username, password, and the distinguished name of the root node which is used for data integration into BlackBerry AtHoc.

This information is automatically stored in the XML file, `AdInfo.xml`, which can be found in the same folder as the `AdTools.exe` file. All values in this XML file are the default values the next time that the AdTools application starts.

Display LDAP Entry Details

This menu command displays all attributes and values for all LDAP entries in the LDAP tree whose root entry is specified in the LDAP information file (`AdInfo.xml`).

Some attributes of the LDAP entries may have multiple values, such as “objectclass” and “memberof”. These values display in sequential order.

Display Class Type and Count

This menu command displays the class hierarchies and counts of their object. This is useful when you need to identify the most specific class for an LDAP entry.

Test Regular Expression

Use this command to test the regular expression pattern to be used in the transform configuration. To test the pattern, input a pattern and string to match.

Appendix B: Migrate from LDAP Sync Client version 1.2.7 to BlackBerry AtHoc User Sync Client

This appendix explains how to migrate the LDAPSync Module configuration files from LDAP Sync Client version 1.2.7 to the BlackBerry AtHoc User Sync Client version 1.0.0.

Prerequisites

Before you migrate your LDAP Client Sync version, complete the following tasks

- [Provision the BlackBerry AtHoc API client](#)
- [Set up an organization code in the BlackBerry AtHoc system](#)

Set authentication parameters

To set authentication parameters in the in AtHocDataIntegration configuration file, make the following changes under the <sdkParameters> node:

1. Remove the **providerId** node.
2. Add **orgCode** and set it to the organization code that you created in [Set up an organization code in the BlackBerry AtHoc system](#).
3. Change the **Url** from `https://AtHocServer/sdk/listener/listen.asp` to `https://AtHocServer`.
4. Add the **clientId** and **clientSecret** that you noted in the [Provision the BlackBerry AtHoc API client](#) section.
5. Provide the **username** and **password** of the user who has the SDK role.

Example

```
<sdkParameters>
  <!-- Organization code (org code)-->
  <orgCode><![CDATA[orgCode]]></orgCode>
  <url>http://AtHocServer</url>
  <username>username</username>
  <password><![CDATA[password]]></password>
  <!-- syncSource: required for static list synch; the synch source must be pre-defined in AtHoc system -->
  <syncSource>AD</syncSource>
  <clientId>AtHoc.IWS.ADSyncClient</clientId>
  <clientSecret isEncrypted=false*><![CDATA[clientSecret]]></clientSecret>

  <!--Configuration for client certificate: Optional-->
  <clientCertificate>
    <!--the subject of the certificate: Optional-->
    <subject>C=US, O=Customer, CN=AtHocServer</subject>
    <!--the store name where the cert resides, either: ROOT,TRUSTEDPEOPLE,TRUSTEDPUBLISHER,AUTHROOT,CERTIFICATEAUTHORITY,MY: Optional-->
    <storeName>ROOT</storeName>
    <!--the cert store location, either: LOCALMACHINE or CURRENTUSER: Optional-->
    <storeLocation>LOCALMACHINE</storeLocation>
  </clientCertificate>
</sdkParameters>
```

Remove deprecated configuration

Under `syncOperations/staticlist`, remove the <operator> node. This node is no longer supported and must be removed.

Migrate from mid to login_id

Terms

- mid
 - The mid was the primary key when synchronizing in previous versions.
 - Display name in BlackBerry AtHoc: Mapping ID
 - Common Name in BlackBerry AtHoc: mapping_id
- login_id
 - The login_id is the Common Name for Username in BlackBerry AtHoc. It is the primary key when synchronizing against BlackBerry AtHoc with the User Sync Client.
 - Display name in BlackBerry AtHoc: Username
 - Common Name in BlackBerry AtHoc: login_id

What is changing?

In LDAP Sync Client 1.2.7 and lower, all user synchronization happened through older SDK code. The SDK payload accepted mid in the input payload field to look up and synchronize users. In the User Sync Client, the API requires login_id as the primary key.

Behavior prior to User Sync Client:

- For the user payload, if a user did not exist with the provided mid, it would create a new user and set the mapping_id and the login_id to mid if the login_id was not separately provided in the payload. If mid was present in the payload, and if the user existed with the same mapping_id, it would then update that record for the user.
- For the distribution list synchronization payload, all mappings were managed by looking up members by their mid.

Behavior in User Sync Client:

- All user lookup and synchronization happens using the login_id (Username.)
- All distribution list-to-user mappings are based on login_id.
- The “mid” field is no longer supported.

Are you affected?

1. Do you set a value for login_id in the template?
 - a. Search for references to login_id.
 - b. If you find any references, you have explicitly set a value for login_id.
 - c. You need to use this LDAP attribute as the primary key. Whatever you previously set to mid can be set to mapping_id.
 - d. Ensure that any LDAP attributes that you are using for login_id have memberExport="true" in the `AtHocDataIntegration.config` file. Your configuration may have the setting for this attribute that was used for mid. Not making this update in the `AtHocDataIntegration.config` file will lead to errors during distribution list member synchronization.
2. Does BlackBerry AtHoc have different values?
 - a. Export all users to a .csv file. Include only the mid and username columns.
 - b. Open the .csv file in Microsoft Excel.
 - c. Add this formula to cell C1 and then fill down: `=IF(A1<>B1,"No match","")`.
 - d. Filter to show only users who have No Match.
 - e. Filter to show only users who have a mapping_id. This is not required when creating users in the UI.
 - f. Any users left may be impacted if synced from the User Sync Client.

If you answered “No” to 1 and 2 above, BlackBerry AtHoc automatically copies the mid to login_id. Switching them will not have an impact.

If you answered “Yes” to either 1 or two above, you will likely need to change the usernames of existing users. Contact BlackBerry AtHoc customer support for assistance.

How to migrate

Complete the following tasks to migrate from mid to login_id.

Change the AtHocDataConfiguration.config file

The attribute that you use for login_id should have memberExport=“true” in the AtHocDataConfiguration.config file.

In the following example, “samaaccountname” is used as the mid prior to 2.0. In 2.0, “userPrincipalName” is used as the login_id, and the memberExport is set to true.

AtHocDataConfiguration.config in LDAP Sync version 1.2.7

```
<class objectClass="user" type="USER" nameAttribute="name">
  <!-- Attributes to be fetched from LDAP for user -->
  <attributes>
    <!-- memberExport is optional; true indicates this attribute will be
    exported for static list membership sync too -->
    <attribute memberExport="true">samaaccountname</attribute>
    <attribute>sn</attribute>
    <attribute>userPrincipalName</attribute>
    <attribute>displayname</attribute>
    <attribute>userAccountControl</attribute>
    <attribute>mail</attribute>
    <attribute>telephoneNumber</attribute>
    <attribute>distinguishedName</attribute>
    <!-- Sample definition to get multi-values of given LDAP attribute
  -->
    <!--<attribute multiValued="true">objectclass</attribute>-->
  </attributes>
</class>
```

AtHocDataConfiguration.config after User Sync Client

```
<class objectClass="user" type="USER" nameAttribute="name">
  <!-- Attributes to be fetched from LDAP for user -->
  <attributes>
    <!-- memberExport is optional; true indicates this attribute will be
    exported for static list membership sync too -->
    <attribute>samaccountname</attribute>
    <attribute>sn</attribute>
    <attribute memberExport="true">userPrincipalName</attribute>
    <attribute>displayname</attribute>
    <attribute>userAccountControl</attribute>
    <attribute>mail</attribute>
    <attribute>telephoneNumber</attribute>
    <attribute>distinguishedName</attribute>
    <!-- Sample definition to get multi-values of given LDAP attribute
  -->
```

```

        <!--<attribute multiValued="true">objectclass</attribute-->
    </attributes>
</class>

```

Change the XSL template file

You must update the existing XSL template file to use login_id as the primary look up key for both the payload and distribution list to member mapping payload as shown in the following examples.

User element in LDAP Sync version 1.2.7

```

<xsl:template match="//hynode[@type='USER']">
  <xsl:element name="user">
    <xsl:attribute name="seqId">
      <xsl:value-of select="position()"/>
    </xsl:attribute>
    <xsl:for-each select="attributes">
      <xsl:element name="mid">
        <xsl:value-of select="samaaccountname"/>
      </xsl:element>
      <xsl:element name="displayName">
        <xsl:value-of select="displayname"/>
      </xsl:element>
      <xsl:element name="firstName">
        <xsl:value-of select="givenname"/>
      </xsl:element>
      <xsl:element name="lastName">
        <xsl:value-of select="sn"/>
      </xsl:element>
    </xsl:for-each>
  </xsl:element>
</template>

```

User element after User Sync Client

```

<xsl:template match="//hynode[@type='USER']">
  <xsl:element name="user">
    <xsl:attribute name="seqId">
      <xsl:value-of select="position()"/>
    </xsl:attribute>
    <xsl:for-each select="attributes">
      <xsl:element name="login_id">
        <xsl:value-of select="samaaccountname"/>
      </xsl:element>
      <xsl:element name="displayName">
        <xsl:value-of select="displayname"/>
      </xsl:element>
      <xsl:element name="firstName">
        <xsl:value-of select="givenname"/>
      </xsl:element>
      <xsl:element name="lastName">
        <xsl:value-of select="sn"/>
      </xsl:element>
    </xsl:for-each>
  </xsl:element>
</template>

```

Distribution list mapping in LDAP Sync v 1.2.7

```

<xsl:element name="members">
  <xsl:for-each select="members/member[@type='USER']">

```

```
<xsl:element name="user">
  <xsl:attribute name="mid">
    <xsl:value-of select="samaccountname"/>
  </xsl:attribute>
</xsl:element>
</xsl:for-each>
```

Distribution list mapping after User Sync Client

```
<xsl:element name="members">
  <xsl:for-each select="members/member[@type='USER']">
    <xsl:element name="user">
      <xsl:attribute name="login_id">
        <xsl:value-of select="samaccountname"/>
      </xsl:attribute>
    </xsl:element>
  </xsl:for-each>
```

Considerations for using User Sync Client to perform LDAP synchronization for existing customers

1. For the User Sync Client to work properly with existing customers, their mapping_id and login_id (Username) must be identical. Or, the combination of mapping_id and login_id in BlackBerry AtHoc needs to be the same as a combination of mapping_id and login_id fields from LDAP as a prerequisite.
2. Change the XSL files as outlined above.
3. Make sure that memberExport is set to true in the AtHocDataConfiguration.config file for the LDAP attribute that you are using to map to login_id.
4. Discourage operators from changing the login_id (Username) for users. As a best practice, set the username to not be editable by end-users in the BlackBerry AtHoc management system under System Setup.

Appendix C: Differences between the CSV Importer Tool and the BlackBerry AtHoc User Sync Client

The BlackBerry AtHoc User Sync Client is the supported way to synchronize .csv files, replacing the CSV Importer Tool. If you were using the CSV Importer Tool before, the following are the major changes that you should be aware of:

- The BlackBerry AtHoc User Sync Client uses the user's **username** as the **primary key** to synchronize users as opposed to the CSV Importer tool which used the **mapping_id**. Ensure that the input .csv file has the username (common name: login_id) present.
- The major functions of the CSV Importer Tool are preserved. However, the configuration file is completely different. See [Configure the data integration file](#) and sub sections for the CSV data adapter, CSV data processor, and data synchronizer.
- The Log file format and Debug steps are different. See [Execute the BlackBerry AtHoc User Sync Client](#).

BlackBerry AtHoc Customer Support Portal

BlackBerry AtHoc customers can obtain more information about BlackBerry AtHoc products or get answers to questions about their BlackBerry AtHoc systems through the Customer Support Portal:

<https://www.blackberry.com/us/en/support/enterpriseapps/athoc>

The BlackBerry AtHoc Customer Support Portal also provides support via computer-based training, operator checklists, best practice resources, reference manuals, and user guides.

Documentation feedback

The BlackBerry AtHoc documentation team strives to provide accurate, useful, and up-to-date technical documentation. If you have any feedback or comments about BlackBerry AtHoc documentation, email athocdocfeedback@blackberry.com. Please include the name and version number of the document in your email.

To view additional BlackBerry AtHoc documentation, visit <https://docs.blackberry.com/en/id-comm-collab/blackberry-athoc>. To view the BlackBerry AtHoc Quick Action Guides, see <https://docs.blackberry.com/en/id-comm-collab/blackberry-athoc/Quick-action-guides/latest>.

For more information about BlackBerry AtHoc products or if you need answers to questions about your BlackBerry AtHoc system, visit the Customer Support Portal at <https://www.blackberry.com/us/en/support/enterpriseapps/athoc>.

Legal notice

©2023 BlackBerry Limited. Trademarks, including but not limited to BLACKBERRY, BBM, BES, EMBLEM Design, ATHOC, CYLANCE and SECUSMART are the trademarks or registered trademarks of BlackBerry Limited, its subsidiaries and/or affiliates, used under license, and the exclusive rights to such trademarks are expressly reserved. All other trademarks are the property of their respective owners.

Patents, as applicable, identified at: www.blackberry.com/patents.

This documentation including all documentation incorporated by reference herein such as documentation provided or made available on the BlackBerry website provided or made accessible "AS IS" and "AS AVAILABLE" and without condition, endorsement, guarantee, representation, or warranty of any kind by BlackBerry Limited and its affiliated companies ("BlackBerry") and BlackBerry assumes no responsibility for any typographical, technical, or other inaccuracies, errors, or omissions in this documentation. In order to protect BlackBerry proprietary and confidential information and/or trade secrets, this documentation may describe some aspects of BlackBerry technology in generalized terms. BlackBerry reserves the right to periodically change information that is contained in this documentation; however, BlackBerry makes no commitment to provide any such changes, updates, enhancements, or other additions to this documentation to you in a timely manner or at all.

This documentation might contain references to third-party sources of information, hardware or software, products or services including components and content such as content protected by copyright and/or third-party websites (collectively the "Third Party Products and Services"). BlackBerry does not control, and is not responsible for, any Third Party Products and Services including, without limitation the content, accuracy, copyright compliance, compatibility, performance, trustworthiness, legality, decency, links, or any other aspect of Third Party Products and Services. The inclusion of a reference to Third Party Products and Services in this documentation does not imply endorsement by BlackBerry of the Third Party Products and Services or the third party in any way.

EXCEPT TO THE EXTENT SPECIFICALLY PROHIBITED BY APPLICABLE LAW IN YOUR JURISDICTION, ALL CONDITIONS, ENDORSEMENTS, GUARANTEES, REPRESENTATIONS, OR WARRANTIES OF ANY KIND, EXPRESS OR IMPLIED, INCLUDING WITHOUT LIMITATION, ANY CONDITIONS, ENDORSEMENTS, GUARANTEES, REPRESENTATIONS OR WARRANTIES OF DURABILITY, FITNESS FOR A PARTICULAR PURPOSE OR USE, MERCHANTABILITY, MERCHANTABILITY, NON-INFRINGEMENT, SATISFACTORY QUALITY, OR TITLE, OR ARISING FROM A STATUTE OR CUSTOM OR A COURSE OF DEALING OR USAGE OF TRADE, OR RELATED TO THE DOCUMENTATION OR ITS USE, OR PERFORMANCE OR NON-PERFORMANCE OF ANY SOFTWARE, HARDWARE, SERVICE, OR ANY THIRD PARTY PRODUCTS AND SERVICES REFERENCED HEREIN, ARE HEREBY EXCLUDED. YOU MAY ALSO HAVE OTHER RIGHTS THAT VARY BY STATE OR PROVINCE. SOME JURISDICTIONS MAY NOT ALLOW THE EXCLUSION OR LIMITATION OF IMPLIED WARRANTIES AND CONDITIONS. TO THE EXTENT PERMITTED BY LAW, ANY IMPLIED WARRANTIES OR CONDITIONS RELATING TO THE DOCUMENTATION TO THE EXTENT THEY CANNOT BE EXCLUDED AS SET OUT ABOVE, BUT CAN BE LIMITED, ARE HEREBY LIMITED TO NINETY (90) DAYS FROM THE DATE YOU FIRST ACQUIRED THE DOCUMENTATION OR THE ITEM THAT IS THE SUBJECT OF THE CLAIM.

TO THE MAXIMUM EXTENT PERMITTED BY APPLICABLE LAW IN YOUR JURISDICTION, IN NO EVENT SHALL BLACKBERRY BE LIABLE FOR ANY TYPE OF DAMAGES RELATED TO THIS DOCUMENTATION OR ITS USE, OR PERFORMANCE OR NON-PERFORMANCE OF ANY SOFTWARE, HARDWARE, SERVICE, OR ANY THIRD PARTY PRODUCTS AND SERVICES REFERENCED HEREIN INCLUDING WITHOUT LIMITATION ANY OF THE FOLLOWING DAMAGES: DIRECT, CONSEQUENTIAL, EXEMPLARY, INCIDENTAL, INDIRECT, SPECIAL, PUNITIVE, OR AGGRAVATED DAMAGES, DAMAGES FOR LOSS OF PROFITS OR REVENUES, FAILURE TO REALIZE ANY EXPECTED SAVINGS, BUSINESS INTERRUPTION, LOSS OF BUSINESS INFORMATION, LOSS OF BUSINESS OPPORTUNITY, OR CORRUPTION OR LOSS OF DATA, FAILURES TO TRANSMIT OR RECEIVE ANY DATA, PROBLEMS ASSOCIATED WITH ANY APPLICATIONS USED IN CONJUNCTION WITH BLACKBERRY PRODUCTS OR SERVICES, DOWNTIME COSTS, LOSS OF THE USE OF BLACKBERRY PRODUCTS OR SERVICES OR ANY PORTION THEREOF OR OF ANY AIRTIME SERVICES, COST OF SUBSTITUTE GOODS, COSTS OF COVER, FACILITIES OR SERVICES, COST OF CAPITAL, OR OTHER SIMILAR PECUNIARY LOSSES, WHETHER OR NOT SUCH DAMAGES

WERE FORESEEN OR UNFORESEEN, AND EVEN IF BLACKBERRY HAS BEEN ADVISED OF THE POSSIBILITY OF SUCH DAMAGES.

TO THE MAXIMUM EXTENT PERMITTED BY APPLICABLE LAW IN YOUR JURISDICTION, BLACKBERRY SHALL HAVE NO OTHER OBLIGATION, DUTY, OR LIABILITY WHATSOEVER IN CONTRACT, TORT, OR OTHERWISE TO YOU INCLUDING ANY LIABILITY FOR NEGLIGENCE OR STRICT LIABILITY.

THE LIMITATIONS, EXCLUSIONS, AND DISCLAIMERS HEREIN SHALL APPLY: (A) IRRESPECTIVE OF THE NATURE OF THE CAUSE OF ACTION, DEMAND, OR ACTION BY YOU INCLUDING BUT NOT LIMITED TO BREACH OF CONTRACT, NEGLIGENCE, TORT, STRICT LIABILITY OR ANY OTHER LEGAL THEORY AND SHALL SURVIVE A FUNDAMENTAL BREACH OR BREACHES OR THE FAILURE OF THE ESSENTIAL PURPOSE OF THIS AGREEMENT OR OF ANY REMEDY CONTAINED HEREIN; AND (B) TO BLACKBERRY AND ITS AFFILIATED COMPANIES, THEIR SUCCESSORS, ASSIGNS, AGENTS, SUPPLIERS (INCLUDING AIRTIME SERVICE PROVIDERS), AUTHORIZED BLACKBERRY DISTRIBUTORS (ALSO INCLUDING AIRTIME SERVICE PROVIDERS) AND THEIR RESPECTIVE DIRECTORS, EMPLOYEES, AND INDEPENDENT CONTRACTORS.

IN ADDITION TO THE LIMITATIONS AND EXCLUSIONS SET OUT ABOVE, IN NO EVENT SHALL ANY DIRECTOR, EMPLOYEE, AGENT, DISTRIBUTOR, SUPPLIER, INDEPENDENT CONTRACTOR OF BLACKBERRY OR ANY AFFILIATES OF BLACKBERRY HAVE ANY LIABILITY ARISING FROM OR RELATED TO THE DOCUMENTATION.

Prior to subscribing for, installing, or using any Third Party Products and Services, it is your responsibility to ensure that your airtime service provider has agreed to support all of their features. Some airtime service providers might not offer Internet browsing functionality with a subscription to the BlackBerry® Internet Service. Check with your service provider for availability, roaming arrangements, service plans and features. Installation or use of Third Party Products and Services with BlackBerry's products and services may require one or more patent, trademark, copyright, or other licenses in order to avoid infringement or violation of third party rights. You are solely responsible for determining whether to use Third Party Products and Services and if any third party licenses are required to do so. If required you are responsible for acquiring them. You should not install or use Third Party Products and Services until all necessary licenses have been acquired. Any Third Party Products and Services that are provided with BlackBerry's products and services are provided as a convenience to you and are provided "AS IS" with no express or implied conditions, endorsements, guarantees, representations, or warranties of any kind by BlackBerry and BlackBerry assumes no liability whatsoever, in relation thereto. Your use of Third Party Products and Services shall be governed by and subject to you agreeing to the terms of separate licenses and other agreements applicable thereto with third parties, except to the extent expressly covered by a license or other agreement with BlackBerry.

The terms of use of any BlackBerry product or service are set out in a separate license or other agreement with BlackBerry applicable thereto. NOTHING IN THIS DOCUMENTATION IS INTENDED TO SUPERSEDE ANY EXPRESS WRITTEN AGREEMENTS OR WARRANTIES PROVIDED BY BLACKBERRY FOR PORTIONS OF ANY BLACKBERRY PRODUCT OR SERVICE OTHER THAN THIS DOCUMENTATION.

BlackBerry Enterprise Software incorporates certain third-party software. The license and copyright information associated with this software is available at <http://worldwide.blackberry.com/legal/thirdpartysoftware.jsp>.

BlackBerry Limited
2200 University Avenue East
Waterloo, Ontario
Canada N2K 0A7

BlackBerry UK Limited
Ground Floor, The Pearce Building, West Street,
Maidenhead, Berkshire SL6 1RL
United Kingdom

Published in Canada