



BlackBerry AtHoc

Plan and Manage Enterprise Organizations

7.19

Contents

- Getting Started..... 5**

- Enterprise management overview..... 6**
 - What is an enterprise or super enterprise configuration?.....6
 - Single organization configuration.....7
 - Enterprise configuration..... 8
 - Super enterprise configuration..... 9
 - Does enterprise solve my problems?.....9
 - When should I use an enterprise configuration?..... 10
 - Enterprise user management..... 11
 - Enterprise publishing.....12
 - AtHoc Connect for peer-to-peer organization alerts..... 12
 - Manage common content with inheritance..... 12
 - Inherited content and settings in the enterprise or super enterprise..... 13

- Create an enterprise hierarchy..... 17**
 - Best practices for creating an enterprise hierarchy..... 17
 - Create and configure the enterprise or super enterprise..... 18
 - Create an enterprise or super enterprise organization..... 18
 - Create a suborganization..... 19

- Migrate existing organizations to an enterprise..... 20**
 - Best practices for migrating to an enterprise organization..... 20
 - Prepare to migrate..... 20
 - Run the Enterprise Migrator tool..... 21
 - Migrate organizations to the enterprise..... 21
 - Promote user attributes and alert folders..... 22

- Manage users in the enterprise or super enterprise..... 23**
 - Enable enterprise features..... 23
 - Enable user uniqueness..... 23
 - Move users in an enterprise organization..... 24
 - Move users from the management system..... 25
 - Move users with a CSV file..... 25
 - View and manage user accounts..... 26
 - Create enterprise distribution lists..... 27

- Manage roles and permissions..... 29**
 - BlackBerry AtHoc roles..... 29
 - Create the Enterprise Administrator..... 30
 - Assign operator permissions for the enterprise or super enterprise..... 30

Restrict the operator user base.....	31
Manage alerts.....	32
Publish an alert to the entire enterprise or super enterprise.....	32
Publish alerts to a subset of the enterprise or super enterprise.....	33
Target by advanced query.....	33
Target by distribution list.....	33
Available reports in the enterprise.....	35
BlackBerry AtHoc Customer Support Portal.....	37
Documentation feedback.....	38
Legal notice.....	39

Getting Started

This document contains information about enterprise concepts, uses, planning, and implementation. It assumes you have detailed knowledge of the BlackBerry® AtHoc® management system, including implementation, user management, and alert management for stand-alone organization configurations.

To learn about the BlackBerry AtHoc management system, see the BlackBerry AtHoc documentation available at: <https://docs.blackberry.com/en/id-comm-collab/blackberry-athoc>.

Enterprise management overview

You can use the enterprise and super enterprise configurations in BlackBerry AtHoc to manage alerts for a large, complex group of users. Using the enterprise or super enterprise configuration, you can delegate alerting to sub enterprise organizations and suborganizations, while you maintain critical, unified alerting policies and processes for the super enterprise or enterprise and its members.

This document discusses the basics of BlackBerry AtHoc enterprise and super enterprise configurations and explains how to plan and implement them.

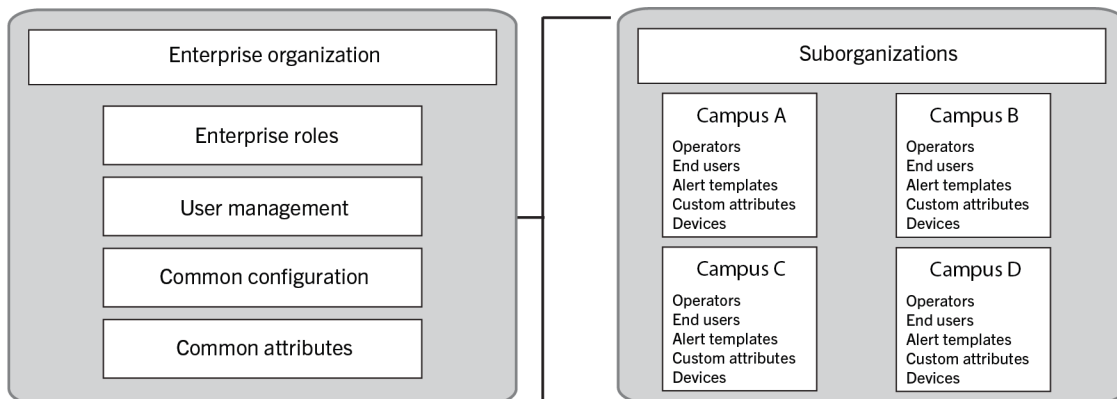
The following topics are covered:

- Enterprise and super enterprise concepts and benefits
- The differences between using a super enterprise, enterprise, or stand-alone configuration
- Integration of AtHoc Connect to improve communication between organizations inside, outside, or across the enterprise
- Tips for migrating your existing organizations to an enterprise configuration or creating an enterprise or super enterprise from scratch
- Enterprise and super enterprise role and permissions management
- User management for enterprise and super enterprise configurations
- Alert publishing in the enterprise and super enterprise

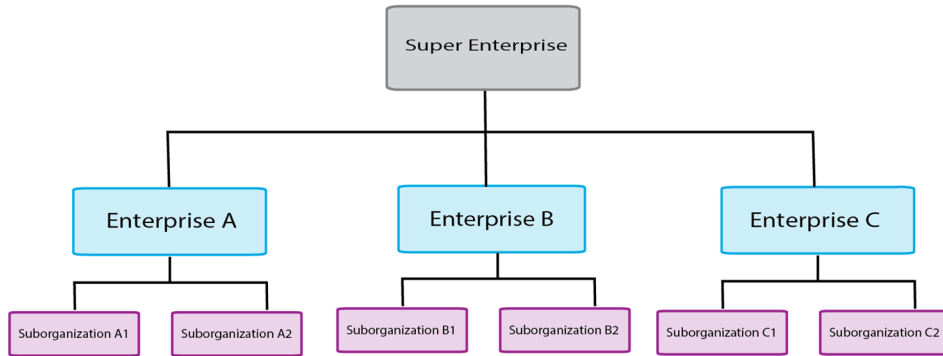
What is an enterprise or super enterprise configuration?

An enterprise or super enterprise configuration is a set of BlackBerry AtHoc organizations in one system that are managed by a single parent organization called the enterprise or super enterprise organization.

The enterprise organization centralizes the user, content, and policy management of its suborganizations.



A super enterprise organization centralizes the user, content, and policy management of its sub enterprise organizations.



In an enterprise organization, user accounts are created in suborganizations, but the enterprise provides a higher-level view. The enterprise also manages common content such as user attributes, audio files, and delivery templates. In a super enterprise organization, user accounts are created in either the super enterprise, sub enterprise organizations, or their suborganizations. Like the enterprise configuration, super enterprise organizations manage common content.

Enterprise configurations use a hierarchy to control the flow of information and centralize management tasks for organizations in the same system. The enterprise organization has one or more suborganizations that are defined by location or purpose. The suborganizations inherit certain configuration settings from the enterprise organization, while the enterprise manages users and provides a way to send alerts to multiple organizations across the enterprise.

Super enterprise configurations use a hierarchy to control the flow of information and centralize management tasks for large organizations. The super enterprise organization has one or more sub enterprise organizations and their suborganizations. The sub enterprises and their suborganizations in a super enterprise follow the same inheritance rules as enterprise configurations.

Single organization configuration

Many BlackBerry AtHoc customers have found that their configurations are becoming too complex.

A single organization configuration can become unwieldy, with distribution lists and user accounts that are difficult to manage and synchronize as users come and go or business units change. Users suffer from too many alerts or fail to get any at all. Additionally, operators can find it difficult to use the Connect network effectively, especially if they are separated geographically. While each location would like to connect with certain neighboring agencies or companies, local alerts from these neighbors show up in everyone's inbox, at times creating an information overload.

Example A

A federal agency has developed one very large organization. Thousands of end users are targeted for various alerts ranging from daily status, emergency drills, or live emergencies. Despite having a flexible system, complex configurations make it difficult to ensure that operators have the correct permission to target only the people they should.

This agency can use the enterprise configuration to better organize personnel into smaller organizations with local administrators to manage user permissions and contact information.

Multiple organizations are great for many sites or regions, can have unique configurations for a location, delegate user management to organization administrators, and can separate distinct functions. However, using multiple organizations loses the benefit of a consolidated view of your operations. It is more difficult to have consistent and centralized communication across all organizations. Independent organizations are harder to maintain, require duplicate configuration effort, and do not have a good way to communicate with each other. Additionally, maintaining consistent user attributes, templates, and distribution lists is impossible because too

much customization is occurring in each organization. Finally, individual organizations can communicate using Connect, but there is no easy way to communicate across all organizations, or with subsets of an organization.

Example B

A military organization has many bases around the world. The organization has created one organization for each base, which has thousands of personnel with rotating assignments and changing permissions (best managed by local administrators). However, with over 50 bases and hundreds of thousands of personnel, the senior leadership cannot effectively alert all bases in a consistent way or alert just the required subset of each base (such as by function). They can not determine, from a single view, who is available and where they are located.

During a major emergency, this military branch cannot account for personnel, send alerts to multiple bases at once, or effectively manage distribution lists that need to span organizations. They need a consistent way to target personnel across all organizations in the system and for those personnel to provide their location and status.

Enterprise configuration

To help large organizations, BlackBerry AtHoc provides the enterprise configuration. Enterprise configuration centralizes communication for multiple organizations, while using inheritance to provide consistent policies and procedures. Alerts can be sent from the enterprise organization to all organizations or subsets of suborganizations.

The enterprise configuration works with AtHoc Connect, allowing suborganizations to communicate with each other and outside organizations, such as vendors or community agencies.

Customers that have a standalone organization with too many users and distribution lists can create multiple suborganizations based on common alerting needs. The enterprise configuration allows you to delegate user management to local organizations, while maintaining the centralized control and communication that the single organization provided.

Example A

A federal agency with an unwieldy single organization can migrate to an enterprise configuration by breaking the large organization into small organizations that represent each geographical location. With multiple locations, the federal agency creates an organization for each alerting region, while retaining the ability to alert all users.

The federal agency also has manageable user bases that operators can maintain locally. The smaller suborganizations makes it easier to manage user contact information and distributions lists. Each suborganization can use AtHoc Connect to communicate with each other or to invite local vendors and community agencies to join AtHoc Connect without impacting the larger enterprise with connect requests and incoming alerts.

With an enterprise configuration, customers that have multiple organizations can have a virtual view of all personnel and consolidate and centralize communication and alert consistency. Enterprises can keep the benefit of multiple organizations, such as user management at the local suborganization.

Example B

A military branch has over 50 organizations, one for each base. To migrate to an enterprise configuration, they implement the following changes:

- They migrate to a configuration that uses three enterprise organizations, one for each continent on which they have bases. They use three enterprises because the emergency alerting for each continent is managed by a different team of people and each continent has different configuration needs.
- All enterprises are in the same system, so that any common content in System Setup can be inherited by the enterprise organizations.
- For each enterprise, they have about five enterprise administrators (EA) and 10 enterprise operators (EO) who can publish alerts to all or parts of the enterprise. At least one EO can access each of the three enterprises.

- Each enterprise organization has suborganizations for each base on that continent.
- Operators can create customized common content for bases on each continent (such as content in additional languages) at the enterprise level. Suborganizations inherit the common content.

Alerts can be sent from the enterprise organization, while personnel in the system can be accounted for by tracking responses to alerts.

The consolidated view provides the leadership with useful personnel accountability information for each continent from their respective enterprise.

Each suborganization can use AtHoc Connect to communicate with their peer suborganizations and affiliates of the organization such as vendors and local governments.

If there is a hurricane on the East coast of the U.S., they can publish alerts to only the appropriate North American alerting regions and ask for responses to check on personnel location, safety status, and availability to assist with recovery. Each base can then alert their Connect affiliates and assess their status.

Super enterprise configuration

Large organizations can use a super enterprise configuration. Super enterprise configuration centralizes communication for multiple enterprise organizations, while using inheritance to provide consistent policies and procedures. Alerts can be sent from the super enterprise organization to all sub enterprises and their suborganizations.

A super enterprise configuration provides all of the features and benefits of an enterprise organization, but for larger enterprises.

Does enterprise solve my problems?

The hierarchy enables the enterprise to delegate user management, while maintaining critical unified alerting policies and processes. The super enterprise or enterprise configuration answers the following questions for many customers:

Question	Answer
Can I have a single user interface for managing all of my users?	<p>Yes you can perform the following types of management from the enterprise or super enterprise organization:</p> <ul style="list-style-type: none"> • Manage user accounts • Filter and search • Create enterprise or super enterprise distribution lists • Create reports
Can I manage operators across my entire system or multiple systems efficiently?	<p>Yes, you can create enterprise or super enterprise operators that have permission to publish alerts to all or parts of the super enterprise or enterprise. You can also limit the ability of operators to publish to only their local organization.</p>
Can I overcome cumbersome cascading configurations for communicating with other organizations or outside affiliates?	<p>Yes, you can use AtHoc Connect at the suborganization level for peer-to-peer alerting or for connecting with outside affiliates.</p>

Question	Answer
Can my users in one suborganization move to another organization efficiently?	<p data-bbox="824 268 1430 520">Yes, you can set the "Enterprise Features" option in the General Settings of the enterprise organization to enforce uniqueness of users in the enterprise and suborganizations. This enables users to move between suborganizations using the same Self Service URL, login credentials, and the same organization code in the BlackBerry AtHoc Desktop App.</p> <p data-bbox="824 541 1463 760">In a super enterprise configuration, enabling the "Enterprise Features" option on the super enterprise enforces uniqueness of users in the super enterprise and its sub enterprises and their suborganizations. This enables users to move between both the sub enterprise organizations and their suborganizations in the super enterprise.</p>

When should I use an enterprise configuration?

Planning your configuration is essential whether you are a small or large organization. You must consider which user roles, security policies, user base size, and content are common to all organizations and whether they need to be centralized by using enterprise alerting, user, and content management.

Enterprise and super enterprise configurations are generally for large, complex implementations with multiple locations that need to segment end users. Small groups find it easier to manage user bases with one or more standalone organizations. The following table compares the use of a standalone organization, multiple standalone organizations, and super enterprises and enterprises with suborganizations.

Setup	Standalone organization	Multiple standalone organizations	Enterprise with suborganizations	Super enterprise with sub enterprises and suborganizations
Advantages	<ul style="list-style-type: none"> • Best for one geographic site • Lowest up-front cost • One-time configuration of common content and settings • Import users once 	<ul style="list-style-type: none"> • Best for multiple sites or regions • Delegate user management to administrators • Unique configurations by location • Distinct operations per site • Works with AtHoc Connect 	<ul style="list-style-type: none"> • Shared configuration between organizations • Centralized user views • Alerting of enterprise users • All the benefits of multiple organizations • Works with AtHoc Connect • Alert folder restrictions are not inherited from one organization to another 	<ul style="list-style-type: none"> • Shared configuration between enterprises and their suborganizations • Centralized user views • Alerting of enterprise users • All the benefits of an enterprise organization • Works with AtHoc Connect • Alert folder restrictions are not inherited from one organization to another
Disadvantages	<ul style="list-style-type: none"> • Difficult to manage operator permissions • Hard to separate team operations • Harder to implement AtHoc Connect effectively 	<ul style="list-style-type: none"> • Hard to maintain multiple configurations and consistency • Requires duplicate effort for entity configuration and security policies • No central user management or alerting between peer organizations • Users that move between sites have to re-enter profile information • Hard to manage personnel accountability 	<ul style="list-style-type: none"> • Migration can be complex • Device configuration is not inherited • Some stand-alone features not available on the enterprise 	<ul style="list-style-type: none"> • Migration is not available • Device configuration is not inherited • Some stand-alone features not available on the super enterprise

Enterprise user management

Enterprise and super enterprise organizations provide a central view of all users in the organization. The Enterprise Administrator manages users at the super enterprise or enterprise level, and is able to grant or revoke operator permissions to the super enterprise or enterprise, as well as create or modify any user account.

You can view all users on the Users screen when you are logged in to the super enterprise or enterprise organization. To identify which organization the user account was created in, you can add the Organization column. This column is based on the enterprise attribute of the same name. To learn more about enterprise user management, see [Manage users in the enterprise or super enterprise](#) and [Manage roles and permissions](#).

Enterprise publishing

To help with consistency across organizations, users with any alert publishing roles for the enterprise or super enterprise organization can create and publish enterprise alert templates. When they are logged in to the enterprise or super enterprise organization, users with alert publishing roles create the templates. Enterprise alert templates are most effective for targeting users in multiple sub enterprises or suborganizations. Alert templates are not inherited by sub enterprise organizations or suborganizations.

Using enterprise attributes, the operator can create common dynamic distribution lists, custom alert responses, and reports. Creating user attributes from the enterprise or super enterprise organization makes them available for publishing enterprise-wide or super enterprise-wide alerts and ensures that operators in each sub enterprise and suborganization can also use them.

While logged into the enterprise or super enterprise organization, operators can [publish alerts](#) that target users from multiple sub enterprise organizations or suborganizations. Targeting works very similarly to stand-alone organizations, except that operators can see users in all sub enterprises and suborganizations to which they have access. When filling out the user targeting section of the alert, the operator can select any user or group to which they have access through their user base. Use the "Organization" attribute to target users in sub enterprise organizations and suborganizations.

AtHoc Connect for peer-to-peer organization alerts

Enterprise is great for targeting users within the enterprise. However, AtHoc Connect is best for communication between suborganizations or outside entities, without targeting individuals. For example, if a site in a federal agency has an IT outage, they can alert other organizations and ask if they have been affected.

You might already be using AtHoc Connect to communicate with outside agencies. You can also enable alerting between organizations in the enterprise with AtHoc Connect. Each suborganization registers for AtHoc Connect and then invites the other organizations in the enterprise to join their network. Operators can then send alerts to their peer organizations, just like they would for outside agencies.

Note: You do not target individuals in another organization through AtHoc Connect. The other organization would need to set up incoming alert rules that publish an alert targeting an individual.

Manage common content with inheritance

One of the main advantages of an enterprise or super enterprise configuration is the ability to create common content or configuration settings in one place and push them down to sub enterprises and suborganizations. This is known as "inheritance".

Security policies are frequently handled as common content, allowing them to be inherited so that consistent policies, procedures, and communication methods can be established across a system. Security policies in a super enterprise organization are inherited to enable the same features as in an enterprise organization, but across multiple systems.

For Cloud configurations, content and settings are set in the super enterprise or enterprise, which allows the cloud to use multitenancy.

There are four levels of inheritance.

- **System:** This is the top level that is used for the entire BlackBerry AtHoc system. A system is defined as a single installation of BlackBerry AtHoc accessed by a single URL. An example of a system user attribute is First Name. All users have the First Name attribute, no matter what organization or enterprise they belong to. System configuration is set in the System Setup (3) organization.
- **Super enterprise:** In a super enterprise, this is the second level of inheritance, used for content and settings that need to be the same across multiple enterprise organizations in different systems.
- **Enterprise:** In a super enterprise configuration, this is the third level of inheritance. In an enterprise configuration, this is the second level of inheritance. This inheritance level is used for content and settings that need to be the same across all sub enterprises and suborganizations. An example is a user attribute called `employeeID`. By setting this attribute at the super enterprise or enterprise level, the content is part of all user profiles that are in the organizations managed by the super enterprise or enterprise.
- **Suborganization:** In a super enterprise configuration, this is the fourth level of inheritance. In an enterprise configuration, it is the third level. This level is primarily used for content that is specific to a single base or location. An example is the user attribute `OptIn4Birthdays`, which is used by only one organization.

Enterprise Example

The following example focuses on attributes, but it also applies to any type of common content.

A federal agency has three organizations managed by a single enterprise. There are three tiers, including one called System Setup at the system level. The enterprise organization is named `Fed_Agency_Enterprise` and it has three suborganizations: East Coast, Mid-West, and West Coast.

The organizations have the following user attributes:

- *System Setup* has three user attributes that are available for the system, which includes all enterprise and suborganizations: `UserName`, `ID`, and `LastName`.
- *Fed_Agency_Enterprise* has three user attributes that are available for the enterprise and its suborganizations: `Department`, `Location`, and `CPR-Trained`.
- The *East Coast* organization has a team that wants to track birthdays, so they have added an attribute called `OptIn4Birthdays`.

An operator in the suborganization can edit the value of an attribute for a user if the operator has access to the organization in which the user attribute was created.

- The System Administrators on System Setup can access and edit user attributes created at the System level. In this example, they can target users through the `UserName`, `ID`, and `LastName` attributes. However, they cannot see any attributes defined at lower levels.
- Enterprise operators have more options. They can view and use all of the attributes inherited from the System level, plus publish, search, create reports, and edit the attributes created in that enterprise organization (`Department`, `Location`, and `CPR-Trained`).
- Operators in the suborganizations can use but not edit user attributes inherited from system and enterprise levels. These operators can also create, use, and edit user attributes for publishing to the local organization. However, operators do not have access to attributes from peer organizations. As a result, operators in the *East Coast* organization can access and edit the `OptIn4Birthdays` user attribute, while none of the other suborganization operators or enterprise or system administrators can use the attribute.

For a list of entities that are inherited, [Inherited content and settings in the enterprise or super enterprise](#).

Inherited content and settings in the enterprise or super enterprise

The following objects can be defined at the super enterprise or enterprise organization, and are inherited by each sub enterprise and suborganization. Some objects must be configured to be inheritable before they are inherited.

User attributes

You can find user attributes in the User Attributes section on the Settings screen.

- Attributes are inherited by lower-level organizations, except for Emergency Community and Organization Hierarchy, which exist at the suborganization level.
- Attributes defined at the system or enterprise can be viewed, but the only fields that can be modified are the Page Layout options. For the Page Layout options, you can decide whether the attribute appears on the Self Service My Profile page and the User Details page in the BlackBerry AtHoc management system. If you opt to have it appear, you can decide how much information is displayed: Basic Info, Physical Addresses, or Advanced Information.
- All aspects of attributes defined at your organization level can be modified with the exception of the attribute type and the organization the attribute is associated with.

Organization code

You can find the organization code in the Enterprise Features section on the General Settings screen. Click **Check Readiness** beside Enterprise Features. The system checks for user uniqueness (no users have the same username or mapping ID). When the check passes, select the Enable check box next to the **Enterprise Features** field to enable enterprise aware mobile registration. When enabled, enterprise aware mobile registration enables users to sign on from a mobile device using the enterprise organization code, or the organization code for any suborganization.

Alert folders

You can configure alert folders in the Basic section on the Settings screen.

- Alert folders created in a super enterprise or enterprise organization are automatically inherited to their sub enterprises and suborganizations.
- Alert folder names must be unique within a super enterprise or enterprise organization.
- Alert folders that are inherited by a sub enterprise or suborganization are available only to operators who have permissions to view or manage them.
- Operators only see alert folders if they have the required roles in their organization to manage alert folders. Inherited alert folders respect the assigned roles of the current operator in the current organization.
- Inherited folders cannot be edited or deleted by an inheriting organization.
- If an operator attempts to delete an alert folder that is in use in an inheriting organization, a warning message is displayed. The operator has the option to download information about the inherited alert folder to view and resolve any dependencies before deleting it.

Alert Templates

Alert templates are not inherited by default. To configure an alert template as inheritable, click the **Inheritable** option in the Alert Template section of the alert template. When an alert template is configured to be inheritable, the following alert template sections are inherited:

- Alert Template details
- Content. Locale and bilingual alerting settings are inherited based on suborganization settings.
- Personal device targeting
- Duration schedules
- Settings
- Delivery templates

The following alert template items are not inherited:

- User targeting by groups, by users, or by advanced query
- Organization targeting
- Mass device targeting
- Recurrence schedules

These alert template items are inherited only when the inheriting organization has the features or settings enabled:

- Delivery locale. Only organizations that have the selected delivery locale active inherit the alert template.
- Mobile Publish settings
- Bilingual alerting
- Device targeting

Organizations that inherit an alert template cannot delete the template, but can modify it when using it to send an alert. Inheriting organizations can duplicate, export, and import inherited templates. Any edits made to the template in the parent organization are updated automatically in the inheriting organizations.

Alert placeholders

You can configure alert placeholders in the BlackBerry AtHoc management system. Click **Alerts > Alert Placeholders** to access the Alert Placeholders manager.

- Placeholder names must be unique. If you attempt to create a placeholder with the same name as a placeholder in an inheriting organization, an error message appears.
- For Date, Date Time, or Time type placeholders, the date and time formatting configured in the inheriting organization is used.
- Alert placeholders created in a super enterprise are automatically inherited from the super enterprises to the sub enterprises and suborganizations.
- Placeholders created in an enterprise organization are automatically inherited from the enterprise to the suborganizations.
- Inherited placeholders cannot be deleted in an inheriting enterprise or suborganization.
- Placeholders that are deleted in a super enterprise or enterprise organization are automatically deleted in any organization that inherited the placeholder.
- Placeholders that are in use in a sub enterprise or suborganization cannot be deleted from the parent organization.
- Inherited placeholders cannot be edited or deleted from the inheriting organization.

Security policies

You can configure security policies in the System Setup section on the Settings screen.

If you need to define unique security requirements for a sub enterprise, enterprise, or suborganization, configure them in the Security Policy page for that organization level, so that the change impacts only that organization.

Delivery templates for the BlackBerry AtHoc desktop app

You can configure delivery templates for the desktop app in the Basic section on the Settings screen.

Audio files

You can configure audio files in the Basic section on the Settings screen.

Devices

You can configure devices in the Devices section of the Settings screen.

- Devices are defined at the system level using the Device Configuration Tool on the BlackBerry AtHoc server.
- Administrators can enable or disable a device for each suborganization.
- Administrators can specify whether the contact information for the device is required for each suborganization.

Feature Enablement

You can enable or disable features from the System Setup section of the Settings screen.

Feature enablement can be defined at the System Setup level, or at the super enterprise, enterprise, sub enterprise or suborganization level and are inherited down the organization hierarchy.

Organization subscriptions

You can enable organization subscriptions from the General Settings section of the Settings screen.

- Organization subscriptions can be enabled at the super enterprise or enterprise level.
- Enterprise Administrators and Organization Administrators can overwrite the inherited organization subscription settings by including or excluding specific organizations in a super enterprise or enterprise organization.

User move

You can enable user move from the General Settings section of the Settings screen.

Enterprise Administrators and Organization Administrators can overwrite the inherited user move settings by including or excluding specific organizations in a super enterprise or enterprise organization.

Create an enterprise hierarchy

Before starting to plan and implement your organization, make sure you read the following section on [Best Practices](#).

Important: For cloud configurations, BlackBerry AtHoc operations must create the enterprise hierarchy.

Best practices for creating an enterprise hierarchy

Consider the following recommendations when planning your implementation:

- Plan the number of suborganizations and sub enterprises (if you are planning a super enterprise configuration) and how they will be organized.
 - Think about which operators need to send alerts to a group of users. An organization is a group of people that need to be alerted by a specific team of operators and is not always a reflection of the corporate organization structure.
 - Create an organization for each alerting region, such as military base, a campus, or a hospital. The alerting regions are often organized by geography, but can also be organized by purpose such as Weather, Security, or Disaster Relief alerts.
 - Do not make the suborganizations too granular. For example, in a large corporation, create organizations by site, region, or division. Do not create an organization for each department or team.
- Create end users and operators at the suborganization level, not at the enterprise or super enterprise level. No user accounts should exist in the enterprise or super enterprise organization because it prevents sending alerts to user accounts in the enterprise or super enterprise unless they are enterprise alerts. If users are in a suborganization, they can get alerts from their location as well as any enterprise or super enterprise alerts. You can see all users in suborganizations from the enterprise or super enterprise organization so there is no reason to create any users at this level.
- Plan the user attributes and alert folders that should be created in the enterprise or super enterprise organization.
 - Use enterprise attributes and alert folders to enforce consistency for all sub enterprises and suborganizations.
 - Think about situations in which you need to alert the entire enterprise or super enterprise. What attributes do you need to target all users in an alert? These attributes should be created at the enterprise or super enterprise level.
 - Attributes that are for only one suborganization should be created at the suborganization level.
 - Do not name a user attribute with the string "Organization." BlackBerry AtHoc provides an enterprise user attribute with this name that is used to identify the suborganization in which a user account is created.
- If you plan to create an organization for "headquarters", make it a suborganization. The enterprise organization should only be used for managing the suborganizations and should not have user accounts for headquarters personnel. A super enterprise organization should only be used for managing the sub enterprises.
- Maintain unique email addresses for users across your suborganizations to provide end users with a single enterprise or super enterprise-wide organization code.
- Enable user uniqueness in the General Settings of the enterprise or super enterprise organization to enforce uniqueness in usernames and mapping IDs across the enterprise or super enterprise organization and all sub enterprise organizations and suborganizations. Having unique users allows you to:
 - Deploy a single desktop app for the enterprise that determines a user's suborganization based on their unique mapping ID.
 - Provide end users with a single Self Service URL that can be used at the suborganization, sub enterprise, enterprise, or super enterprise level.


- Provide end users with a single enterprise or super enterprise-wide organization code that they can use to sign in to their suborganization client.

Create and configure the enterprise or super enterprise


1. Plan your configuration. See [Enterprise management overview](#) and [Best practices for creating an enterprise hierarchy](#).
2. Log in to the System Setup (3) organization using the login values provided by BlackBerry AtHoc customer support.
3. Create an enterprise organization and suborganizations. For a super enterprise configuration, create the super enterprise organization and then map sub enterprise organizations to it.

Important: For cloud configurations, BlackBerry AtHoc operations must perform this step.



Create an enterprise or super enterprise organization

1. Log in to the **System Setup** organization as a System Administrator.
2. To access the Organizations Manager, do one of the following:
 - a. In the navigation bar, click .
 - b. On the **Settings** screen, in the **System Setup** section, click **Organizations Manager**.

Or:

 - a. In the navigation bar, click the name of your organization and then click the link with your organization name.
 - b. On the **Organization Hierarchy** window, click **Manage Organization Hierarchy**.
3. On the **Organizations Manager** screen, click **New**.
4. On the **New Organization** window, enter the name of the new enterprise or super enterprise organization.
5. From the **Type** pull-down list, select **Super Enterprise** or **Enterprise**.
6. From the **Locale** pull-down list, select a locale. This locale is inherited by the sub enterprise organizations and suborganizations.
7. Click **Save**.
8. In the navigation bar, click your username > **Change Organization**.
9. Optionally, on the **Change Organization** screen, do any of the following:
 - Click the name of an organization in the **Name** column to view the organization hierarchy of that organization.
 - In the search field, enter an organization code, ID, or name, and then click  or press **Enter** on your keyboard to filter the displayed organizations.
 - Click any column header to sort the list of available organizations.
 - From the **All Organizations** pull-down list, select **Super Enterprise** or **Enterprise** to filter the list of organizations.
10. Click **Switch**.
11. On the **Change Organization** confirmation window, click **OK**.
12. Optionally, configure the organization. For detailed instructions, see "[Configure a new organization](#)" in the *BlackBerry AtHoc System Settings and Configuration* guide.
13. To create an additional enterprise or super enterprise organization, you can duplicate a peer-level organization. To duplicate the organization, go to the Organizations Manager, select the enterprise or super enterprise organization you created, and click **Duplicate**. When a super enterprise organization is duplicated, its organization hierarchy is not duplicated.

Create a suborganization

1. Log in to the enterprise or super enterprise organization as a System Administrator.
2. To access the Organizations Manager, do one of the following:
 - a. In the navigation bar, click .
 - b. On the **Settings** screen, in the **System Setup** section, click **Organizations Manager**.
- Or:
 - a. In the navigation bar, click the name of your organization and then click the link with your organization name.
 - b. On the **Organization Hierarchy** window, click **Manage Organization Hierarchy**.
3. On the **Organizations Manager** screen, click **New**.
4. Enter the name of the new organization and click **Save**.
5. In the navigation bar, click your username > **Change Organization**.
6. Optionally, on the **Change Organization** screen, do any of the following:
 - Click the name of an organization in the **Name** column to view the organization hierarchy of that organization.
 - In the search field, enter an organization code, ID, or name, and then click  or press **Enter** on your keyboard to filter the displayed organizations.
 - Click any column header to sort the list of available organizations.
 - From the **All Organizations** pull-down list, select **Sub Organizations** to filter the list of organizations.
7. Click **Switch**.
8. On the **Change Organization** confirmation window, click **OK**.
9. (Optional or save for later) Configure the organization. For detailed instructions, see "[Configure a new organization](#)" in the *BlackBerry AtHoc System Settings and Configuration* guide.
10. After you configure the new organization, you can duplicate a peer-level organization. To duplicate the organization, open the Organizations Manager, select an organization, and click **Duplicate**.

Migrate existing organizations to an enterprise

After you upgrade to the latest release of BlackBerry AtHoc, you can migrate to an enterprise configuration.

Note: Existing organizations cannot be migrated to a super enterprise organization. Existing organizations must be mapped to a super enterprise organization. For more information, see "[Map enterprise organizations to a super enterprise](#)" in the *BlackBerry AtHoc System Settings and Configuration* guide.

Best practices for migrating to an enterprise organization

Consider the following recommendations when you plan your migration.

- Rename any existing user attribute with the name "Organization" to avoid conflicts. BlackBerry AtHoc provides an enterprise user attribute with this name for targeting users by organization.
- Plan the number of suborganizations and how they are organized.
 - Create a new enterprise organization rather than reuse a headquarters organization if there are existing users. Move the headquarters organization under the enterprise level.
 - Do not make the suborganizations too granular. For example, in a large corporation, create organizations by site, region, or division. Do not create an organization for each department or team.
- Plan the promotion of attributes and alert folders. Content that is common among the existing organizations should be promoted.
 - Use enterprise attributes and alert folders to enforce consistency.
 - If more than one organization uses the same user attribute, the attribute should be promoted to the enterprise level.
 - If organizations use different values for the same user attribute being promoted, all values are promoted to the enterprise level.
 - Think about situations in which you need to alert the entire enterprise. What attributes do you need to target all users in an alert? These attributes should be promoted to the enterprise level.
 - Attributes that are for only one suborganization should stay at the suborganization level.
 - The "Emergency Community" and "Organization Hierarchy" attributes are not available for targeting in the enterprise organization.
- Create all user accounts at the suborganization level, not at the enterprise level.
- Authorized administrators can manage suborganization accounts from the enterprise organization.

Prepare to migrate

Important: For Cloud configurations, BlackBerry AtHoc operations must perform the following steps.

Use the Enterprise Migrator tool to move your existing organizations to an enterprise configuration.

Important: Plan your hierarchy before you use the tool. After you save your changes, you cannot change the hierarchy.

Prerequisite: Before you run the migrator tool, create an organization that will be the enterprise organization. Existing organizations likely have users and have been used for local alerting. Instead of re-purposing an organization for the enterprise, create an empty organization. This method allows current organizations to continue operations without interruption and enables you to start with a clean enterprise organization.

Using the migration tool, you will specify the new organization to be the enterprise organization. You then move other organizations under the enterprise. These organizations become subordinate to the enterprise.

The Enterprise Migrator tool migrates existing operators that have an enterprise administrator role in a suborganization to organization administrator. Other operator permissions remain unchanged.

When you move an organization into the enterprise organization, the AtHoc Connect relationships and user accounts remain unchanged for the organization.

Run the Enterprise Migrator tool

Run the Enterprise Migrator tool to move standalone organizations under an enterprise organization. You can also promote attributes and alert folders from suborganizations to the enterprise or system level.

1. Log in to the BlackBerry AtHoc server and change to the following directory:

```
..\AtHocENS\ServerObjects\Tools
```

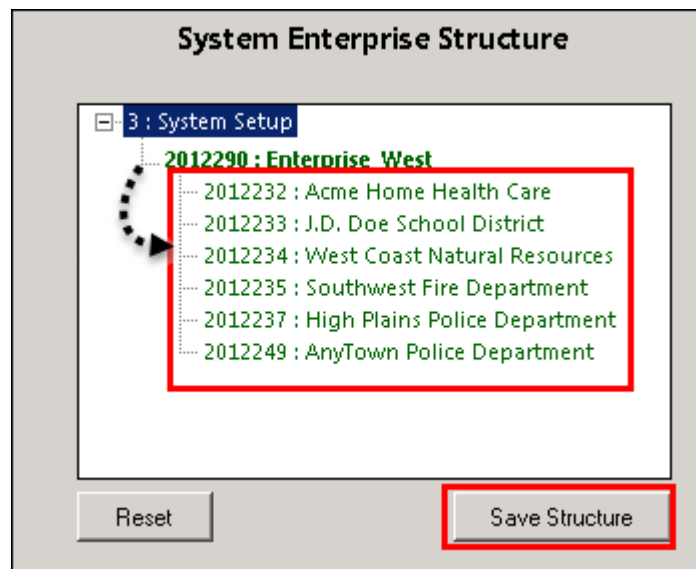
2. Locate the following file: `EAMigrator.exe`.
3. Right-click the file and select **Run as Administrator**.

Migrate organizations to the enterprise

The Enterprise Migrator tool displays the organizations currently in your BlackBerry AtHoc system. By default, new organizations that are created in the system are listed under the System Setup node. These are standalone organizations. You can move them under an enterprise organization to become a suborganization. If an organization is missing, it likely has an incorrect organization type, such as "draft."

Prerequisite: Plan your hierarchy before you use the tool. After you save your changes you cannot change them.

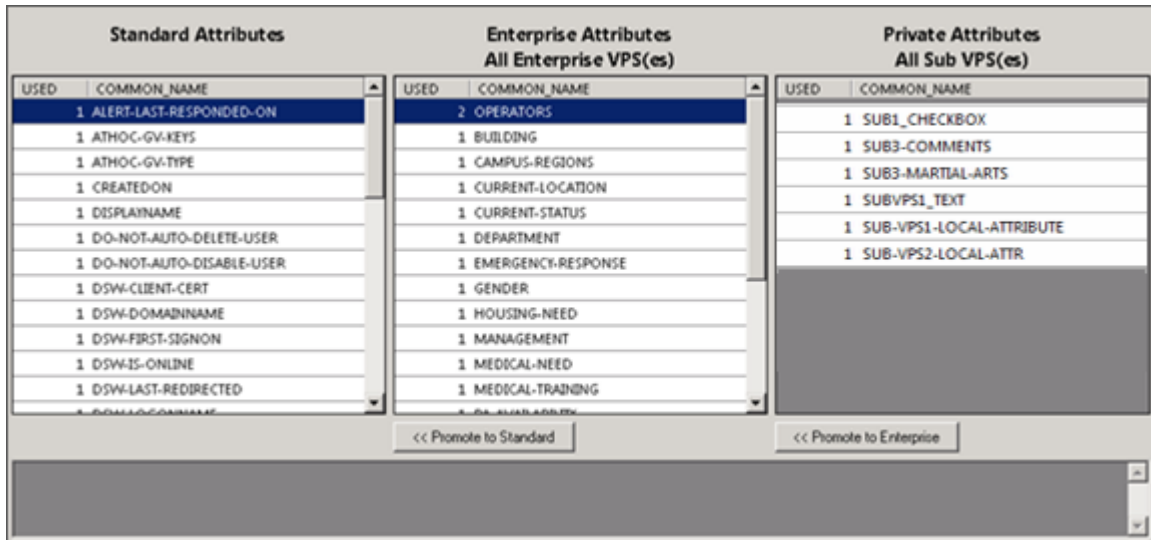
1. In the first column of the Enterprise Migrator tool, drag and drop any organization under another organization to specify the enterprise and suborganization levels. For example, the following image shows seven organizations. When the tool opens, all are considered standalone organizations. Six organizations have been dragged under Enterprise West, migrating them to suborganizations.
2. Verify your structure carefully. You cannot undo the next step.
3. Click **Save Structure**.



Promote user attributes and alert folders

During migration, you specify at which level the user attributes and alert folders are defined: system, enterprise, or suborganization level. If only a small group of users in a suborganization needs access to an attribute, it should be handled locally. However, for commonly used attributes or alert folders, the system or enterprise level is the typical location.

1. Open the Enterprise Migrator tool and click **User Attributes**.
2. Determine how many instances there are of an attribute at the suborganization and enterprise organization level and promote if it seems efficient. If you promote an attribute to the enterprise level, it is promoted from the suborganizations within the enterprise.



3. Select the attribute name.
4. Verify that you want to promote the attribute. You cannot undo the next step.
5. Click **Promote to Enterprise** to move the attribute up to a higher level.

Promote an attribute from suborganization to enterprise if the entire enterprise needs to use the attribute. Keep the attribute in a suborganization if you want to restrict access to a single organization. For example, promote a general attribute like `DepartmentName` to enterprise because each employee needs to be grouped in a department. Alternatively, keep an attribute like `SoftballTeam` at the suborganization because its members have joined a lunch-time league.

6. Click **Alert Folders**.
7. Select an alert folder type to promote, and click **Promote to Enterprise** based on what types of alerts certain personnel should see.

For example, promote an alert folder such as `FireDrills` from suborganization to enterprise if the entire enterprise needs to receive alerts from that alert folder. Keep an alert folder such as `ExecutiveSafety` at suborganization if you want to restrict access to operators and users that have a need to know.

8. Save your changes.
9. Restart IIS after you have made structure or content changes.

You have completed the migration to the enterprise.

Postrequisite

Grant permissions to the enterprise for the enterprise administrator for access to the suborganizations. Next, grant enterprise access to operators that need to publish alerts across the enterprise.

Manage users in the enterprise or super enterprise

The enterprise configuration provides centralized user management for all suborganizations under the enterprise organization. A super enterprise configuration provides centralized user management for all sub enterprise organizations and suborganizations under the super enterprise organization. Enterprise and super enterprise organizations provide a virtual view of users in all sub enterprises and suborganizations. Using the virtual view, you can perform most of the operations as if the user accounts were created in the enterprise or super enterprise.

Enable enterprise features

You can manage user accounts from a super enterprise, enterprise, or suborganization if user uniqueness is enforced in your super enterprise or enterprise. When uniqueness is enforced, the system checks for uniqueness of usernames and mapping IDs in the super enterprise, enterprise, and suborganizations when a new user is created from the BlackBerry AtHoc desktop app, Self Service, User Sync Client, or through the BlackBerry AtHoc management system. When user uniqueness is enforced, the following items are enabled:


- **A single enterprise desktop app:** Set up the desktop app to connect to the enterprise. The desktop app then searches for users across the super enterprise or enterprise and connect to the correct enterprise or suborganization. If the user is not found, a new user is created in the super enterprise or enterprise.
- **A single enterprise Self Service URL:** Users in any suborganization can log in using the same Self Service URL for the super enterprise organization, enterprise organization, or suborganization.
- **Mobile registration from an enterprise organization code:** Users can register from their mobile device using the organization code for the super enterprise, enterprise organization, or for any suborganization.
- **User import and export:** Users can be imported into any suborganization directly from the super enterprise or enterprise organization. Users from suborganizations can be exported from the super enterprise or enterprise.
- **User move:** Users can be moved from one suborganization to another. You can move users between suborganizations through the Users page in the management console, or through the import process.
- **Subscribed organizations:** Users can subscribe to multiple suborganizations in a super enterprise or enterprise organization. Once subscribed, users can receive alerts and events targeted to them in both their home and subscribed organizations.

For more information, see the [BlackBerry AtHoc Enterprise Features](#) guide.

Note: Unique email addresses are not enforced in the BlackBerry AtHoc management system when user uniqueness is enabled. However, it is a best practice to have a unique email address for each user in your super enterprise, enterprise organizations, and suborganizations.

Enable user uniqueness

Before enabling user uniqueness at the super enterprise level, all sub enterprises must have user uniqueness enabled. Once user uniqueness is enabled on the super enterprise, enterprise features such as user move and organization subscription are automatically inherited to the sub enterprises and the options to enable them are disabled on the sub enterprises.

1. Change to the super enterprise or enterprise organization.
2. In the navigation bar, click .
3. On the **Settings** screen, in the **Basic** section, click **General Settings**.
4. In the **Enterprise Features** section, click **Check Readiness** beside Enterprise Features. The system checks for user uniqueness (no users have the same username or mapping ID.)

If the system finds duplicate users, the Duplicate Users Found window opens and provides a list of duplicate users, their usernames, mapping IDs, and organizations. You must modify any duplicate usernames or mapping IDs to proceed with enabling user uniqueness.

Click **Export to Excel** to download and save the list of duplicate users. After you update the duplicate users, run the duplicate user check again. If no duplicate users are found, a Check Passed message displays. Click **Close** to return to the **General Settings** page. The Check Readiness button is replaced by an **Enable** check box.

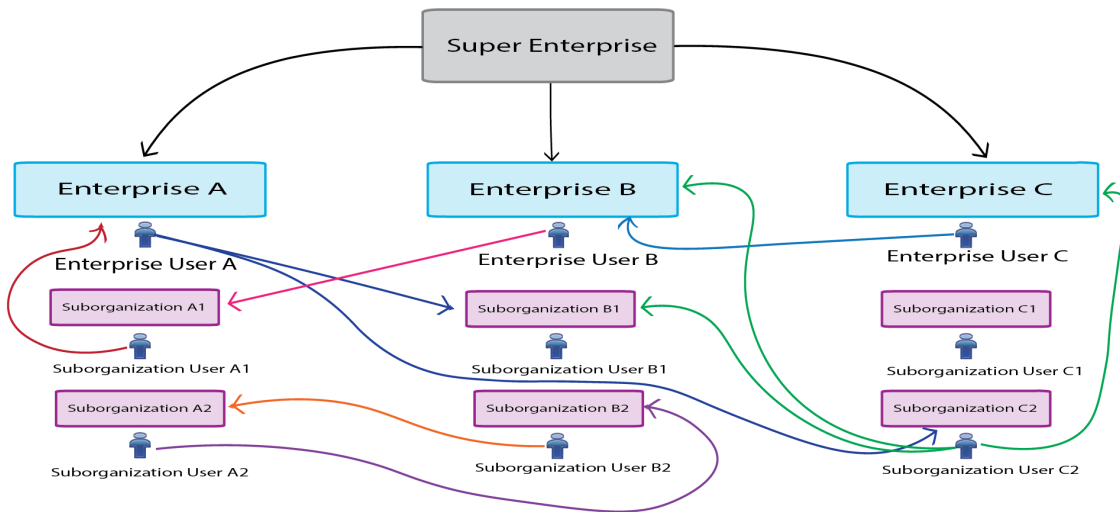
5. Select the **Enable** check box.
6. Click **Save**.

Move users in an enterprise organization

The Enterprise User Move feature enables operators in an enterprise organization to easily move users between the different organizations in their enterprise. Enterprise Administrators can move users from the enterprise organization to any suborganization, from one suborganization to another, or from a suborganization to the enterprise organization. Enterprise operators can import users at the enterprise level, and then move them into the appropriate suborganization.

Enterprise Administrators can move users between suborganizations from the enterprise organization. Operators who are End Users Managers, Organization Administrators, Alert Managers, or Advanced Alert Managers in a suborganization can move users from their suborganization to other suborganizations.

Enterprise Administrators who are logged in to a super enterprise organization can move users from a suborganization of one enterprise organization to a suborganization in a different enterprise organization within the super enterprise. They can also move users between sub enterprises, from a suborganization to a sub enterprise, or from a sub enterprise to any suborganization.



Select the User Move for End Users option in General Settings in a suborganization to enable users to move themselves to that suborganization in Self Service. This option is enabled by default.

Users must be unique across the super enterprise, enterprise, and all suborganizations to use the Enterprise User Move feature. See [Enable user uniqueness](#) for more information.

When a user is moved from an organization, any roles they had in their original organization are revoked. If a user is later moved back to their original organization, the user's roles are not reinstated. The one exception is for users in the enterprise organization with the Enterprise Administrator role.

When a user is moved, any subscriptions to other suborganizations are automatically cancelled.

When a user is moved, their dependents are also moved.

The history of moved users is preserved. Sent alert reports still display all targeted users that were in the organization at the time the alert was sent.

The status of a user in their original organization (enabled or disabled) is preserved after being moved.

The attribute values for users (for example, personal device addresses) are preserved after being moved, even if those devices or attributes are not enabled in the new organization.

Once a user is moved out of an organization, they can no longer be targeted in any alerts, including draft or scheduled alerts, from that organization.

When a user is moved, their position in the organizational hierarchy is removed. If the user is later moved back to their original organization, their place in the hierarchy is reinstated if the node still exists. However, if the node the user was associated with no longer exists in the original organization, the user is associated with the root node.

When a user is moved by an operator or moves themselves, information about the move is recorded in the User Activity section in the user's profile and in the operator audit trail.

To prevent users from being moved between organizations after you have manually moved them either through the management system or by using the CSV import process, set the Prevent User Move attribute for those users. This is useful if you want to prevent users from being moved by an external synchronization source such as LDAP or ADSync.

Move users from the management system

Enterprise Administrators can move users between their enterprise and suborganizations using the BlackBerry AtHoc management system. Enterprise Administrators who are logged in to a super enterprise organization can move users between the suborganizations of any enterprise within the super enterprise.

You can move up to 1000 users at a time. Dependent users are moved with their sponsor users.

Operators who are End Users Managers, Organization Administrators, Alert Managers, or Advanced Alert Managers in a suborganization can move users from their suborganization to other suborganizations.

User uniqueness must be enabled before you can move users between organizations. For more information, see [Enable enterprise features](#).

1. In the navigation bar, click **Users > Users**.
2. On the **Users** screen, select the check boxes beside the users that you want to move.
3. Click **More Actions > Move**. The Move Users window opens.
4. Select an organization from the **Organization** list.

If any users you are moving have the Prevent User Move attribute enabled, the **Move locked users** option appears and is selected by default. When selected, the Move locked users option allows users to be moved regardless of whether the Prevent User Move attribute has been set.

The **Lock all users after move** option is selected by default. When selected, the Lock all users after move option adds the Prevent User Move attribute to all moved users. This is useful to prevent any external synchronization sources from moving the users.

5. Click **Move**.

The selected users are moved to the selected organization. Any roles that the users had in their original organizations are revoked. Users in an enterprise organization with the enterprise administrator role retain this role.

Move users with a CSV file

Enterprise Administrators can use the import and export process to move large groups of users between their enterprise and suborganizations. Enterprise Administrators who are logged in to a super enterprise

organization can use the import and export process to move users between the suborganizations of any enterprise organization within the super enterprise.

Operators who are End Users Managers, Organization Administrators, Alert Managers, or Advanced Alert Managers in a suborganization can move users from their suborganization to other suborganizations.

User uniqueness must be enabled before you can move users between organizations. For more information, see [Enable enterprise features](#).

1. In the navigation bar, click **Users > Users**.
2. Select the check boxes beside the users you want to move.
3. Click **More Actions > Export > Users**.
4. On the **Export Users** screen, use the **Add>** button to move the **Organization** and **Prevent User Move** columns to the Selected Columns section.
5. Use the **Add>** button to select any additional columns to include in the export file.
6. Click **Export CSV**.
7. Save the CSV file to your local system.
8. Open the CSV file on your local system.
9. Update the **Organization** column for any users you want to move. You can also add rows to include new users and specify the organization you want to add them to.
10. Update the **Prevent User Move** column. Enter **Yes** for all users to block them from being moved to another organization. Enter **No** to unblock users if they already have the **Prevent User Move** attribute set.
Note: When creating users, the Prevent User Move check box is set and the user is created. If a user is already in an organization, the Prevent User Move attribute is respected upon import. You cannot move and then prevent a future move in the same import action when moving users with the CSV import process.
11. Save the updated CSV file.
12. In the management system, click **Back** to return to the **Users** screen.
13. Click **More Actions > Import > Users**.
14. Click **Browse** and navigate to the updated CSV file on your local system.
15. On the **Import User Files** screen, verify that the **Organization** and **Prevent User Moves** columns are selected in the **Select the columns to import** section.
16. Click **Import**.

When the import process completes, you can select **Download Log** to view the results.

View and manage user accounts

You can manage user accounts from a super enterprise organization, enterprise organization, or from a suborganization.

From the enterprise or super enterprise organization users list

An Enterprise Administrator can perform many of the user management tasks that they can from a standalone or suborganization, including:

- View and update user accounts from any suborganization
- Use search and filter to find user accounts from any suborganization
- Add or change roles for any user, such as adding enterprise operator roles
- Restrict the user base of an operator at the super enterprise, enterprise, or suborganization
- Create static and dynamic distribution lists across multiple organizations
- Delete or disable user accounts in the enterprise

- Import and export users from the super enterprise, enterprise, or suborganization

From the suborganization users list

The following user management tasks must be performed in the suborganization:

- Create user accounts
- Add an operator role for a specific suborganization
- Import users when creating a new organization

Create enterprise distribution lists

When you plan your alerting strategies, you need to identify groups of users to alert across the enterprise or super enterprise and create distribution lists that target the correct groups. Distribution lists help the operator send an alert quickly under stressful conditions, reducing the risk of targeting the wrong recipients.

You can populate a distribution list with a static list of users or create a dynamic list based on attributes or queries that are flexible enough to handle changes within the enterprise or super enterprise.

Distribution Lists are not inherited by sub enterprises or suborganizations.

Use static distribution lists when the group is small or very stable, or when certain people (instead of roles) must receive alerts.

Use dynamic distribution lists when there are large groups that need to be targeted, or when personnel frequently change roles.

Tip: Use the `Organization` attribute to search for users across multiple organizations when creating static distribution lists. You can also use this attribute in an advanced query when creating a dynamic list.

Create an enterprise static distribution list

1. Log in to the BlackBerry AtHoc management system on the enterprise or super enterprise organization as an Enterprise Operator.
2. Create a static distribution and provide a name that signals that it is enterprise-wide, such as `Ent-SeniorStaff`.
3. Build the list of users in the **Distribution List Members** section.
 - a. Click **Modify** to add users to the list.

Note: If your user base has been restricted, the user list shows only the users in your user base.
 - b. Select users from the list. Use the **Organizations** column to determine which organizations users belong to.
 - c. Click **Add Selected** to save the users you selected to the distribution list.
4. Click **Save**.

Create an enterprise dynamic distribution list

Create a dynamic distribution list to target users in multiple organizations. Personnel changes can impact a list, so use a condition to target users that meet the criteria instead of selecting individual users that might move out of the organization.

You can use the enterprise `Organization` attribute, to select users based on the organization that they belong to.

1. Create a dynamic distribution list from the enterprise or super enterprise organization and provide a name that signals that the list is enterprise-wide, such as `Ent-SeniorStaff`.
2. In the **Distribution List Members** section, click **Edit**.

3. In the **Select Attribute** list, select an enterprise attribute to use as targeting criteria for the distribution list.

An enterprise attribute is defined at the enterprise organization level and inherited by suborganizations.

4. In the **Select Operator** list, select the query operator needed for the condition, such as `equals`.

Note: The list of operators varies depending on the type of attribute selected.

5. In the third field, enter a value, or select one or more available values for the attribute.
6. When you have finished adding conditions, click **Add** to add the criteria to the dynamic list.
7. Click **Save**.

Manage roles and permissions

BlackBerry AtHoc roles are the same in the enterprise or super enterprise, with a few exceptions.

Define user accounts in suborganizations, and then grant them access from the enterprise or super enterprise organization.

The Enterprise Administrator is an operator role that creates and manages the member organizations and common content. Typically, there are 2–5 operators with this role in the enterprise or super enterprise, depending on the size of your organization. The Enterprise Administrator also grants operator access to the enterprise or super enterprise and specifies the user base for each enterprise operator.

Note: The operator account for the Enterprise Administrator exists in a suborganization, but the System Administrator (or another Enterprise Administrator) grants the appropriate roles from the users manager in the enterprise or super enterprise organization.

The Enterprise Administrator role provides full permissions for the enterprise or super enterprise organization and for all sub enterprise organizations and suborganizations. The Enterprise Administrator role is granted to an operator account from one of the suborganizations. The Enterprise Administrator cannot grant System Administrator roles and permissions.

An enterprise operator is an operator with any BlackBerry AtHoc role except administrator roles. For example, when assigned the Advanced Alert Publisher role at the enterprise or super enterprise level, an operator can send alerts to users and distribution lists across the enterprise or super enterprise, based on their user base definition.

The enterprise operator can target users in multiple member organizations, based on a system or custom user attribute. They can also use a static distribution list with members from across multiple sub enterprise organizations or suborganizations. Or, the operator can use a dynamic distribution list (with a common attribute such as dept='IT') to target members in multiple organizations.

Some or all sub enterprise organizations and suborganizations might have enterprise operators, depending on which operators need to alert the enterprise or super enterprise.

Note: The operator account exists in a sub enterprise or suborganization, but the Enterprise Administrator grants the appropriate roles from the users manager in the enterprise or super enterprise organization.

BlackBerry AtHoc roles

Enterprise Administrators, Organization Administrators, and System Administrators can grant operator permissions to any user who needs access to the BlackBerry AtHoc management system. Granting operator permissions includes selecting which roles the user has when they are logged in, as well as setting any restrictions. Roles are additive: you can assign multiple roles and they build on one another, such as End Users Manager and Advanced Alert Publisher.

Administrators cannot assign or revoke higher level operator permissions than their own permissions. For example, an Organization Administrator can revoke or grant Organization Administrator permissions to another operator, but cannot grant Enterprise Administrator or System Administrator permissions.

The role that a user is assigned to determines what BlackBerry AtHoc features they can access. Roles that are associated with specific features in BlackBerry AtHoc can only be assigned to users when that feature is enabled for that user's organization. The features in the following table are restricted to specific roles.

Feature	Roles
Account	<ul style="list-style-type: none"> Accountability Manager Accountability Officer
Activity Log	<ul style="list-style-type: none"> Activity Log Manager Activity Log Viewer
Connect	Connect Agreement Manager
<p>Note: Connect is enabled and the Connect Agreement Manager role becomes available when organizations are connected.</p>	
Situation Response	<ul style="list-style-type: none"> Plan Manager Plan Incident Manager
Collaborate	Collaboration Manager

The following sections describe the roles that are available in BlackBerry AtHoc.

For more information, see the [BlackBerry AtHoc Roles and Permissions Matrix](#).

Create the Enterprise Administrator

Best Practice: Do not create any user accounts in the enterprise or super enterprise organization.

1. Log in to the BlackBerry AtHoc management system as a System Administrator or Enterprise Administrator.
2. Optionally, change to the appropriate suborganization and then create a new user, if needed.
3. Change to the enterprise or super enterprise organization and open an existing user account from the Users list.
4. Grant the Enterprise Administration role for the user.
 - a. From the user details screen, click **Modify Operator Permissions**.
 - b. On the **Operator Permissions** screen, click **Operator Roles**.
 - c. Select the **Enterprise Administrator** role.

Note: Granting the Enterprise Administrator role gives the user full administrator permissions to all member organizations.

5. When needed, enter a password for the operator.
6. Click **Save**.

Assign operator permissions for the enterprise or super enterprise

Grant enterprise publishing roles for any operator that needs to send alerts to users in more than one organization. The role is granted to an operator account that exists in one of the sub enterprise organizations or suborganizations.

1. Log in to the BlackBerry AtHoc management system as a System Administrator or Enterprise Administrator.
2. Optionally, change to the appropriate suborganization and create a new user, if needed.

3. Change to the enterprise or super enterprise organization and open an existing user account from the Users list.
4. Grant roles for the user to specify their permissions within the enterprise or super enterprise.
 - a. From the user details screen, click **Modify Operator Permissions**.
 - b. On the **Operator Permissions** screen, click **Operator Roles**.
 - c. Click to select each of the roles you want to assign to the enterprise operator.

You can grant any available role, such as Advanced Alert Manager or Alert Publisher. These roles provide the same access to the enterprise or super enterprise, as they do on a standalone, sub enterprise, or suborganization.

- d. To remove an operator permission, click **X** beside the role name.

Tip: Specify a user base for the operator to limit their access to specific groups of users.

Restrict the operator user base

Your security policies might require that you limit enterprise operator access by the type of distribution lists, organization, or seniority of an end user. Use user base definitions to define these restrictions for the operator.

Note: You cannot modify the user base of an operator to give them a less restricted user base than you have.

1. From the operator profile, under **User Base**, select **Restricted** and click **Modify**.

The Create Conditions screen opens. You can create conditions (queries) that target users in more than one member organization of the enterprise or super enterprise. The conditions use enterprise attributes that are inherited at the member organization level.

- a. In the **Select Attribute** field, click the down arrow to select an attribute.
- b. Select an operator such as `equals`, `not equals`, or `is empty`.
- c. Specify the values that either include or exclude users based on the chosen attribute.

Note: The `Organization` attribute targets users in specific member organizations.

For example, if the manager of the IT engineers across the enterprise should only be able to send alerts to their personnel, restrict their user base with the condition `Department equals IT`.

Or, if an enterprise operator should only be able to publish alerts to organizations in the United States, specify the `EastCoast`, `MidWest`, and `WestCoast` values for the `Organization` attribute.

2. When needed, enter a password for the operator.
3. Click **Save**.

Manage alerts

You must be an Enterprise Administrator or have operator permissions on the enterprise organization to publish an alert to the entire enterprise organization or to a subset of organizations in the enterprise organization. In a super enterprise organization, you must be an Enterprise Administrator on the super enterprise organization.

Enterprise operators can publish alerts across the enterprise or super enterprise, either to the entire group or to subsets based on attributes or user base restrictions. To publish an enterprise or super enterprise alert, you must be logged into the enterprise or super enterprise organization and have enterprise operator permissions. You must use an alert template created at the enterprise or super enterprise level. Enterprise Administrators can view alerts sent in sub enterprise organizations and suborganizations, and republish those alerts.

You can use enterprise user attributes and alert folders to target users. You can create enterprise user attributes for each user segment that must be targeted. For example, if you need to publish alerts to the IT departments across the organization, create a Department attribute with a pick list that includes the value IT.

Publish an alert to the entire enterprise or super enterprise

Targeting the enterprise or super enterprise assumes that you want to contact all users in all sub enterprise organizations and their suborganizations of the enterprise or super enterprise. This type of alert should be a rare event, especially if you have multiple organizations that are separated by geography or function.

Best Practice: Target the smallest group of users necessary. Done too frequently, publishing an alert to the full user base will be considered spamming and users will ignore the alerts that are urgent.

Prerequisites

- Verify that devices and gateways are enabled for all targeted devices and gateways in the enterprise or super enterprise organization.
 - Verify that you have alerting operator permissions on the enterprise or super enterprise with an unlimited user base.
1. Log in to the BlackBerry AtHoc management system and switch to the enterprise or super enterprise organization.
 2. Create or open an enterprise alert template or blank alert.
 3. Enter the alert title and content.
 4. In the **Targeting** section, select the **By Groups** tab and select **All User Base**.
 5. Select the devices that reach as many users as possible. Include mass devices to extend coverage to users that are out of range of other targeted devices.

You can use the devices, gateways, and delivery templates that are enabled for the enterprise or super enterprise.

6. Review the alert:
 - Ensure that the content provides critical and relevant information to the majority of recipients.
 - Check the spelling and the accuracy of the content.
 - Verify that the device coverage reaches enough users.
7. Publish the alert.

Publish alerts to a subset of the enterprise or super enterprise

Typically, when you send an enterprise-level alert, you want to limit it to those sub groups the alert is relevant to. For example, if you have an enterprise with multiple locations in the United States, and you need to send an alert only to users on the East Coast, you would not include those in the West Coast or the Mid West organizations.

Tip: When users frequently receive irrelevant alerts, they begin viewing all alerts as spam and ignore or block them. Over-targeting on a regular basis becomes a serious issue when essential alerts are ignored.

You can target a subset of users by using user attributes that are defined in the enterprise or super enterprise organization, or by distributions lists. For example, an enterprise operator sends out an alert to a subset of users in three member organizations. The operator can either use enterprise attributes, such as Office Building= "A, B, C" and Department = "IT", or a dynamic distribution list to target the IT staff in the three buildings on different campus locations in the region.

Target by advanced query

You can use user attributes in advanced queries to target users by department, location, skills, or status.

For example, enterprise operators in a federal agency can use the Department and OfficeBuilding enterprise attributes to target users by office building and department to alert IT personnel that there is an outage affecting three buildings.

1. Log in to the BlackBerry AtHoc management system and switch to the enterprise or super enterprise organization.
2. Create or open an alert template, or create a blank alert.
3. Create the content.
4. To target by user attribute, click the **Advanced Query** tab.
5. Click **Add Condition**.
6. Create a condition (attribute, operator, and value) to target users that exist in the organizations that you must reach. The following image shows the conditions for our IT outage example.



The image shows a screenshot of the advanced query interface. It contains two rows of conditions. The first row has a dropdown menu with 'Office Building', an equals sign, a dropdown menu with 'equals', and a text input field with 'A, B, C'. The second row has a dropdown menu with 'Department', an equals sign, a dropdown menu with 'equals', and a text input field with 'IT'. Each row ends with a red minus sign button.

7. Select the devices and any organizations that you need to include.
8. Review and publish the alert.

Target by distribution list

Enterprise distribution lists can include users in multiple organizations, as long as the creator has user base permission to access the user and the organization. Static and dynamic distribution lists provide a quick and efficient method for targeting multiple users across the enterprise or super enterprise.

For example, the enterprise operator can alert IT personnel in the federal agency suborganizations with an enterprise distribution list of just IT members.

Prerequisite: Distribution lists must exist in the enterprise or super enterprise organization and include members of the user base of the enterprise operator. These are users from organizations that the enterprise operator can access. For more information, see [Create enterprise distribution lists](#).

1. Log in to the BlackBerry AtHoc management system and switch to the enterprise or super enterprise organization.
2. Create or open an alert template, or create a blank alert.
3. Specify the title and the content.

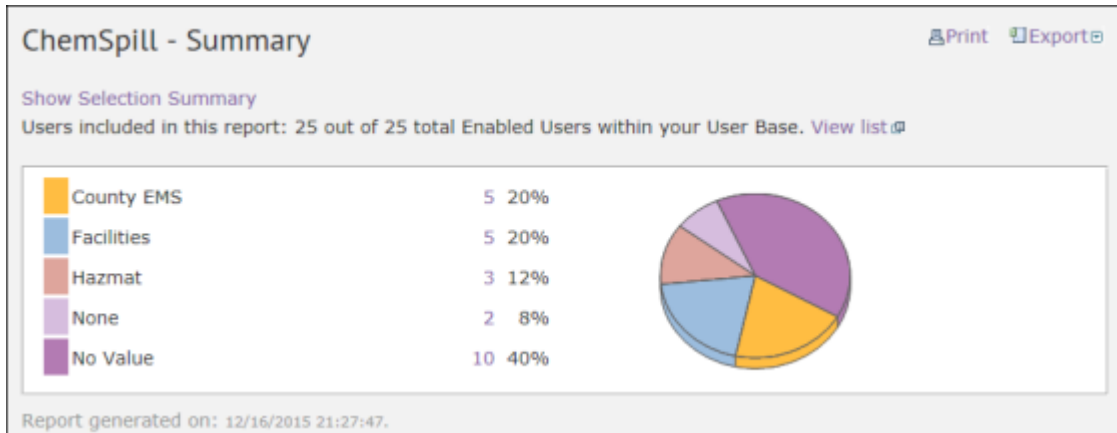
4. To target a subset of enterprise users, click the **By Groups** tab.
5. Click the **Distribution Lists** folder.
6. Select a distribution list that specifies the users in the organizations that you need to target.
7. Select the devices.
8. Ensure the devices are enabled in the organizations and that you are able to reach the users in the various organizations.
9. Review and publish the alert.

Available reports in the enterprise

You can create and review reports in the enterprise or super enterprise organization like you can in a standalone organization. In the navigation bar, click **Reports**.

The following reports are available:

- **Personnel Reports:** This report is generated using enterprise user attributes and shows views of all enterprise personnel.



- **Alert Usage Summary:** This report shows the total number of alerts or messages by organization over time.

Alerts Usage Summary - Total Number of Alerts Over Time					Page 1 of 1
Organizations	Total	Dec 15	Nov 15	Oct 15	
Acme Home Health Care (2012232)	0	0	0	0	
AnyTown Police Department (2012249)	11	0	7	4	
Enterprise_West (2012290)	2	0	2	0	
High Plains Police Department (2012237)	6	0	4	2	
J.D. Doe School District (2012233)	3	0	1	2	
Southwest Fire Department (2012235)	4	0	4	0	
West Coast Natural Resources (2012234)	5	0	3	2	
Total	31	0	21	10	

- **User Summary:** This report provides a count, by organization, of the number of enabled users.

User Summary

Page 1 of 1

Organizations	Enabled Users
Acme Home Health Care (2012232)	10
Enterprise_West (2012290)	7
High Plains Police Department (2012237)	8
J.D. Doe School District (2012233)	7
Southwest Fire Department (2012235)	3
West Coast Natural Resources (2012234)	2
Total	44

BlackBerry AtHoc Customer Support Portal

BlackBerry AtHoc customers can obtain more information about BlackBerry AtHoc products or get answers to questions about their BlackBerry AtHoc systems through the Customer Support Portal:

<https://www.blackberry.com/us/en/support/enterpriseapps/athoc>

The BlackBerry AtHoc Customer Support Portal also provides support via computer-based training, operator checklists, best practice resources, reference manuals, and user guides.

Documentation feedback

The BlackBerry AtHoc documentation team strives to provide accurate, useful, and up-to-date technical documentation. If you have any feedback or comments about BlackBerry AtHoc documentation, email athocdocfeedback@blackberry.com. Please include the name and version number of the document in your email.

To view additional BlackBerry AtHoc documentation, visit <https://docs.blackberry.com/en/id-comm-collab/blackberry-athoc>. To view the BlackBerry AtHoc Quick Action Guides, see <https://docs.blackberry.com/en/id-comm-collab/blackberry-athoc/Quick-action-guides/latest>.

For more information about BlackBerry AtHoc products or if you need answers to questions about your BlackBerry AtHoc system, visit the Customer Support Portal at <https://www.blackberry.com/us/en/support/enterpriseapps/athoc>.

Legal notice

©2023 BlackBerry Limited. Trademarks, including but not limited to BLACKBERRY, BBM, BES, EMBLEM Design, ATHOC, CYLANCE and SECUSMART are the trademarks or registered trademarks of BlackBerry Limited, its subsidiaries and/or affiliates, used under license, and the exclusive rights to such trademarks are expressly reserved. All other trademarks are the property of their respective owners.

Patents, as applicable, identified at: www.blackberry.com/patents.

This documentation including all documentation incorporated by reference herein such as documentation provided or made available on the BlackBerry website provided or made accessible "AS IS" and "AS AVAILABLE" and without condition, endorsement, guarantee, representation, or warranty of any kind by BlackBerry Limited and its affiliated companies ("BlackBerry") and BlackBerry assumes no responsibility for any typographical, technical, or other inaccuracies, errors, or omissions in this documentation. In order to protect BlackBerry proprietary and confidential information and/or trade secrets, this documentation may describe some aspects of BlackBerry technology in generalized terms. BlackBerry reserves the right to periodically change information that is contained in this documentation; however, BlackBerry makes no commitment to provide any such changes, updates, enhancements, or other additions to this documentation to you in a timely manner or at all.

This documentation might contain references to third-party sources of information, hardware or software, products or services including components and content such as content protected by copyright and/or third-party websites (collectively the "Third Party Products and Services"). BlackBerry does not control, and is not responsible for, any Third Party Products and Services including, without limitation the content, accuracy, copyright compliance, compatibility, performance, trustworthiness, legality, decency, links, or any other aspect of Third Party Products and Services. The inclusion of a reference to Third Party Products and Services in this documentation does not imply endorsement by BlackBerry of the Third Party Products and Services or the third party in any way.

EXCEPT TO THE EXTENT SPECIFICALLY PROHIBITED BY APPLICABLE LAW IN YOUR JURISDICTION, ALL CONDITIONS, ENDORSEMENTS, GUARANTEES, REPRESENTATIONS, OR WARRANTIES OF ANY KIND, EXPRESS OR IMPLIED, INCLUDING WITHOUT LIMITATION, ANY CONDITIONS, ENDORSEMENTS, GUARANTEES, REPRESENTATIONS OR WARRANTIES OF DURABILITY, FITNESS FOR A PARTICULAR PURPOSE OR USE, MERCHANTABILITY, MERCHANTABILITY, NON-INFRINGEMENT, SATISFACTORY QUALITY, OR TITLE, OR ARISING FROM A STATUTE OR CUSTOM OR A COURSE OF DEALING OR USAGE OF TRADE, OR RELATED TO THE DOCUMENTATION OR ITS USE, OR PERFORMANCE OR NON-PERFORMANCE OF ANY SOFTWARE, HARDWARE, SERVICE, OR ANY THIRD PARTY PRODUCTS AND SERVICES REFERENCED HEREIN, ARE HEREBY EXCLUDED. YOU MAY ALSO HAVE OTHER RIGHTS THAT VARY BY STATE OR PROVINCE. SOME JURISDICTIONS MAY NOT ALLOW THE EXCLUSION OR LIMITATION OF IMPLIED WARRANTIES AND CONDITIONS. TO THE EXTENT PERMITTED BY LAW, ANY IMPLIED WARRANTIES OR CONDITIONS RELATING TO THE DOCUMENTATION TO THE EXTENT THEY CANNOT BE EXCLUDED AS SET OUT ABOVE, BUT CAN BE LIMITED, ARE HEREBY LIMITED TO NINETY (90) DAYS FROM THE DATE YOU FIRST ACQUIRED THE DOCUMENTATION OR THE ITEM THAT IS THE SUBJECT OF THE CLAIM.

TO THE MAXIMUM EXTENT PERMITTED BY APPLICABLE LAW IN YOUR JURISDICTION, IN NO EVENT SHALL BLACKBERRY BE LIABLE FOR ANY TYPE OF DAMAGES RELATED TO THIS DOCUMENTATION OR ITS USE, OR PERFORMANCE OR NON-PERFORMANCE OF ANY SOFTWARE, HARDWARE, SERVICE, OR ANY THIRD PARTY PRODUCTS AND SERVICES REFERENCED HEREIN INCLUDING WITHOUT LIMITATION ANY OF THE FOLLOWING DAMAGES: DIRECT, CONSEQUENTIAL, EXEMPLARY, INCIDENTAL, INDIRECT, SPECIAL, PUNITIVE, OR AGGRAVATED DAMAGES, DAMAGES FOR LOSS OF PROFITS OR REVENUES, FAILURE TO REALIZE ANY EXPECTED SAVINGS, BUSINESS INTERRUPTION, LOSS OF BUSINESS INFORMATION, LOSS OF BUSINESS OPPORTUNITY, OR CORRUPTION OR LOSS OF DATA, FAILURES TO TRANSMIT OR RECEIVE ANY DATA, PROBLEMS ASSOCIATED WITH ANY APPLICATIONS USED IN CONJUNCTION WITH BLACKBERRY PRODUCTS OR SERVICES, DOWNTIME COSTS, LOSS OF THE USE OF BLACKBERRY PRODUCTS OR SERVICES OR ANY PORTION THEREOF OR OF ANY AIRTIME SERVICES, COST OF SUBSTITUTE GOODS, COSTS OF COVER, FACILITIES OR SERVICES, COST OF CAPITAL, OR OTHER SIMILAR PECUNIARY LOSSES, WHETHER OR NOT SUCH DAMAGES

WERE FORESEEN OR UNFORESEEN, AND EVEN IF BLACKBERRY HAS BEEN ADVISED OF THE POSSIBILITY OF SUCH DAMAGES.

TO THE MAXIMUM EXTENT PERMITTED BY APPLICABLE LAW IN YOUR JURISDICTION, BLACKBERRY SHALL HAVE NO OTHER OBLIGATION, DUTY, OR LIABILITY WHATSOEVER IN CONTRACT, TORT, OR OTHERWISE TO YOU INCLUDING ANY LIABILITY FOR NEGLIGENCE OR STRICT LIABILITY.

THE LIMITATIONS, EXCLUSIONS, AND DISCLAIMERS HEREIN SHALL APPLY: (A) IRRESPECTIVE OF THE NATURE OF THE CAUSE OF ACTION, DEMAND, OR ACTION BY YOU INCLUDING BUT NOT LIMITED TO BREACH OF CONTRACT, NEGLIGENCE, TORT, STRICT LIABILITY OR ANY OTHER LEGAL THEORY AND SHALL SURVIVE A FUNDAMENTAL BREACH OR BREACHES OR THE FAILURE OF THE ESSENTIAL PURPOSE OF THIS AGREEMENT OR OF ANY REMEDY CONTAINED HEREIN; AND (B) TO BLACKBERRY AND ITS AFFILIATED COMPANIES, THEIR SUCCESSORS, ASSIGNS, AGENTS, SUPPLIERS (INCLUDING AIRTIME SERVICE PROVIDERS), AUTHORIZED BLACKBERRY DISTRIBUTORS (ALSO INCLUDING AIRTIME SERVICE PROVIDERS) AND THEIR RESPECTIVE DIRECTORS, EMPLOYEES, AND INDEPENDENT CONTRACTORS.

IN ADDITION TO THE LIMITATIONS AND EXCLUSIONS SET OUT ABOVE, IN NO EVENT SHALL ANY DIRECTOR, EMPLOYEE, AGENT, DISTRIBUTOR, SUPPLIER, INDEPENDENT CONTRACTOR OF BLACKBERRY OR ANY AFFILIATES OF BLACKBERRY HAVE ANY LIABILITY ARISING FROM OR RELATED TO THE DOCUMENTATION.

Prior to subscribing for, installing, or using any Third Party Products and Services, it is your responsibility to ensure that your airtime service provider has agreed to support all of their features. Some airtime service providers might not offer Internet browsing functionality with a subscription to the BlackBerry® Internet Service. Check with your service provider for availability, roaming arrangements, service plans and features. Installation or use of Third Party Products and Services with BlackBerry's products and services may require one or more patent, trademark, copyright, or other licenses in order to avoid infringement or violation of third party rights. You are solely responsible for determining whether to use Third Party Products and Services and if any third party licenses are required to do so. If required you are responsible for acquiring them. You should not install or use Third Party Products and Services until all necessary licenses have been acquired. Any Third Party Products and Services that are provided with BlackBerry's products and services are provided as a convenience to you and are provided "AS IS" with no express or implied conditions, endorsements, guarantees, representations, or warranties of any kind by BlackBerry and BlackBerry assumes no liability whatsoever, in relation thereto. Your use of Third Party Products and Services shall be governed by and subject to you agreeing to the terms of separate licenses and other agreements applicable thereto with third parties, except to the extent expressly covered by a license or other agreement with BlackBerry.

The terms of use of any BlackBerry product or service are set out in a separate license or other agreement with BlackBerry applicable thereto. NOTHING IN THIS DOCUMENTATION IS INTENDED TO SUPERSEDE ANY EXPRESS WRITTEN AGREEMENTS OR WARRANTIES PROVIDED BY BLACKBERRY FOR PORTIONS OF ANY BLACKBERRY PRODUCT OR SERVICE OTHER THAN THIS DOCUMENTATION.

BlackBerry Enterprise Software incorporates certain third-party software. The license and copyright information associated with this software is available at <http://worldwide.blackberry.com/legal/thirdpartysoftware.jsp>.

BlackBerry Limited
2200 University Avenue East
Waterloo, Ontario
Canada N2K 0A7

BlackBerry UK Limited
Ground Floor, The Pearce Building, West Street,
Maidenhead, Berkshire SL6 1RL
United Kingdom

Published in Canada